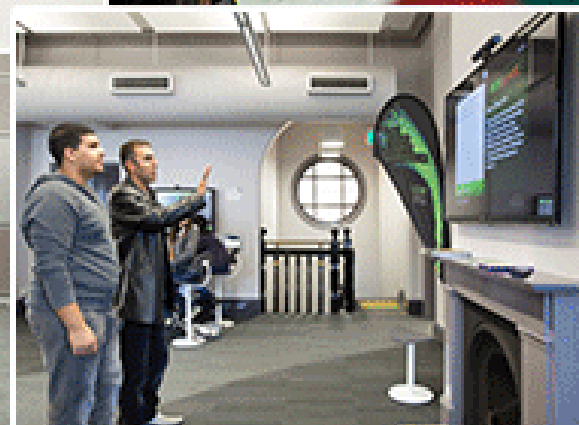


## In this issue:

- 2 New Book Addresses Local Government Sustainability Crisis
- 3 Governor-General Congratulates CRC REP and UNE Business School Researchers
- 5 Seminar Series
- 5 Michigan State University
- 6 EDC Update
- 7 HSC Study Day
- 9 Research Outcomes
- 10 Conference Reports
- 11 ANZSEE Conference



**Professor  
Alison Sheridan**  
Head of School

Earlier this month, I visited the UNE Future Campus in Parramatta (pictured above) to gain a better understanding of the facilities and scope for us to engage more fully with the site. It is a great space. To this point, our own teaching facilities here in W39 and W40 have limited our capacity to more actively engage with the opportunities the Future Campus offers, but I am pleased to report that the renovations for LT1, 2 and 3 and TR 1 - 4 are on

track for completion by T1 of 2014. The electronic resources which will be embedded in these rooms will make everyone's lives easier. As we saw from the recent survey run by our Educational Development and Communication team, the limited facilities in the rooms now are very frustrating for everyone. We are hopeful that for 2014, you will find the teaching spaces much more conducive to creative and engaging activities with our students.

I understand that the planning for the coming year's teaching allocations is underway in the disciplines. It is important that all staff be engaged with this collaborative process. While the discipline leaders facilitate the meetings where you discuss the allocations, the decisions about the optimal allocation of units across the teaching staff should be made through the collective wisdom and goodwill of the discipline group, heeding the principles we have agreed will underpin the School's workload policy. It is worth reminding yourself of these principles (see [http://www.](http://www.une.edu.au/business-school/forstaff/downloads/School%20Workload%20Policy%202013.pdf)

[une.edu.au/business-school/forstaff/downloads/School%20Workload%20Policy%202013.pdf](http://www.une.edu.au/business-school/forstaff/downloads/School%20Workload%20Policy%202013.pdf)). In attending to these matters now, the process of managing the workloads in the coming year will be more efficient for everyone.

The working group formed to shape a framework for representing our research and teaching have been most productive. Their ideas for Adaptable UNE Business School are fantastic. Our next steps will be to embed these in our web pages and tell the story of our research and teaching more clearly to a wider audience. The collective insight of the working group was really valuable for this process, and my thanks to all the members of the group for their contributions.

Thanks to Kylie for the revitalisation of the newsletter this month. We hope you like the new format.

# New Book Addresses Local Government Sustainability Crisis



**Professor  
Brian Dollery**

A book just launched at the University of New England could not be any more timely or topical, with local councils facing infrastructure renewal backlogs that they cannot afford and many having recently been described as less than sustainable. The Federation Press published “Funding the Future - Financial Sustainability and Infrastructure Finance in Australian Local Government” was co-authored by Professor Brian Dollery, Dr Michael Kortt and Dr Bligh Grant, of the Centre for Local Government at UNE. Member for Northern Tablelands, Adam Marshall officially launched the new resource.

“This is a very important book,” Mr Marshall said. “It accurately and comprehensively encapsulates the plight of local government, nationally. It also looks at constructive ways to address the financial sustainability issues confronting our councils, as highlighted by the infrastructure backlog in NSW.”

“It’s great that the expertise for this book has come from regional universities because regional councils struggle with infrastructure cost burdens more starkly.”

Professor Brian Dollery said the book does not merely look at finance issues in councils. “We look at potential solutions. We assessed various

proposals for dealing with endemic infrastructure backlogs and came up with our own proposal,” he said. “We present a case for a National Local Government Finance Authority. This authority would be guaranteed through Federal Government backing. It would be financed through the sale of bonds, loans from superannuation funds and the corporate sector. Interest on loans from this authority would be lower than bank financing. The cost burden of infrastructure renewal can be spread, cost-effectively, through time.”

“Our Centre for Local Government at UNE plays an important role in Australian local government. We are the only such centre that looks in-depth, with high quality research, into local structure, finance and reform. An independent local government review panel has recommended amalgamations across NSW, on the back of no research at all. We are working to make policy decisions more informed, through first-class research.”

Co-author, Michael Kortt from Southern Cross University’s Business School said nationally, cost estimates of resolving local government infrastructure backlogs could be

upwards of \$15 billion. “We need a mechanism created so that local governments have an option where they can access affordable loans for capital expenditure. Our bond bank idea would be a sustainable solution,” he said.

The backlog issue was the primary reason why Armidale Dumaresq Council Mayor, Cr. Jim Maher recently opposed amalgamation with Guyra, Uralla and Walcha Shires. He said that due to backlogs in those councils, Armidale Dumaresq ratepayers would be taking on a massive burden.

Mr Marshall said he was honoured to launch “Funding the Future”, adding that it is relevant and timely. “The review panel within the current local Government reform process will release its report to the Minister for Local Government next month. This book confirms my belief that amalgamation is not the answer, particularly in regards to infrastructure backlogs and financial sustainability,” he said.

For further information please contact:  
Leanne White: 0422 581 714





# Governor-General Congratulates CRC REP and UNE Business School Researchers



**Dr Boyd Blackwell**  
Post Doc Research Fellow

On Thursday 8 August, the Governor General, Her Excellency, Quentin Bryce, attended the 10 year celebrations of Ninti One and its research network, the CRC for Remote Economic Participation, at the National Portrait Gallery, Canberra. The Governor General thanked researchers and staff for their important and valued work in remote Australia. Amongst the researchers attending were Dr Boyd Blackwell and Mr Stuart Robertson. (Professor Sheridan also attended). (Refer to photos of GG and Ninti One Board and UNE Business School CRC REP Team).

On the previous day, Stuart made a presentation to the CRC REP student

forum at the Gallery, on his Master of Philosophy in Mine Lifecycle Planning and Enduring Value for Remote Communities in South Australia (SA). Stuart's thesis is supervised by Boyd, Prof. Fiona McKenzie, Research Leader from Curtin University, and Assoc Prof. Neil Argent. Together their work forms part of the Enduring Community Value from Mining Project. (pictured over page).

In the final day, Boyd and Stuart attended a CRC REP Researcher Day at the Rydges Hotel, providing valuable feedback to the institution's operation.

Importantly, the series of events allowed Alison, Boyd and Stuart, to meet people ranging from the Board of Ninti One through to on-the-ground researchers, end-users, and partners of the CRC REP program. Because many of these people are scattered across the country, it is through events like this that people get to meet in person, network and gain additional resources and feedback on their research.

Boyd and Stuart also found time to visit the National Library and collect historical data on mine production and employment for their case study locations of central Northern Territory

(NT) and central SA respectively. This data will be used in the preparation of a paper on labour stocks and flows and common-benefits from mining in remote NT, SA and Western Australian locations.

Boyd also took a "walk'n talk" around Lake Burley Griffin with Prof. Jon Altman from the Centre for Aboriginal Economic Policy Research of ANU. This provided some valuable guidance on methods and data for his project.

Boyd is a postdoctoral research Fellow with the CRC REP based at the UNE Business School supervised by Fiona and Prof. Brian Dollery. His project involves tracking and mapping mining expenditure in remote NT communities. His field work begins next month with a survey of mine workers followed by a survey of businesses. This will help gauge the economic contribution of mining to remote communities.

Stuart has successfully obtained a CRC REP scholarship studying with the UNE Business School and will also go to field and upgrade to his PhD later this year.

Boyd and Stuart are due to present on their projects at the forthcoming Mining in a Sustainable World Conference at UNE on 13-15 October 2013.

More details of the CRC REP project including presentations, papers and flyers can be found at: <http://crc-rep.com/research/regional-economies/enduring-community-value-mining>.

Watch the You Tube clip about Ninti One:

<http://www.youtube.com/watch?v=2PbwUXBsAEo>

Boyd can be contacted directly on 02 6773 3279 or [boydb@une.edu.au](mailto:boydb@une.edu.au) and Stuart on 02 6773 2959 or [srobert9@une.edu.au](mailto:srobert9@une.edu.au). *Continued on next page...*





## Recent publications include:

Blackwell B and B Dollery (2014) Mining Royalties and Aboriginal Expenditure, *Economic Papers* (in print).

[http://onlinelibrary.wiley.com/journal/10.1111/\(ISSN\)1759-3441](http://onlinelibrary.wiley.com/journal/10.1111/(ISSN)1759-3441)

Blackwell B and B Dollery (2014) The impact of mining expenditure on remote communities in Australia: The Ranger uranium mine and the Tanami gold mine in the Northern Territory, *Australasian Journal of Regional Studies* (in print), 20(1). <http://www.anzrsai.org/index.pl?page=9>

Blackwell B and B Dollery (2013) Income factor shares from mining in remote Australia: An analysis of the Ranger uranium mine and the Tanami gold mine in the Northern Territory, *Australasian Journal of Regional Studies* (in print), 19(3). <http://www.anzrsai.org/index.pl?page=9>

Blackwell B (2012a) Local and regional government in remote and unincorporated Australia: Sui Generis? *Public Policy*, 7(1), pp. 23-46. Accessed 12 Dec 2012 from:

<http://search.informit.com.au/fullText;dn=501999120872176;res=IELFSC>

## Recent presentations include:

Blackwell B and B Dollery. 2012a. Factor shares from mining: case studies from remote Northern Territory. Australian and New Zealand Society for Ecological Economics 2012 Conference - Green Growth or De-Growth? 12-15 November. Bond University, Queensland. Accessed 21 August 2013 from: [http://www.slideshare.net/Ninti\\_One/anzsee2012-blackwell-dolleryincomefactorshares](http://www.slideshare.net/Ninti_One/anzsee2012-blackwell-dolleryincomefactorshares)

Blackwell B, Dollery B and B Grant. 2012b. Placeshaping and governance in remote Australia. Australian and New Zealand Society for Ecological Economics 2012 Conference - Green Growth or De-Growth? 12-15 November. Bond University, Queensland. Accessed 21 August 2013 from: [http://www.slideshare.net/Ninti\\_One/anzsee2012-blackwell-dollerygrantplaceshaping](http://www.slideshare.net/Ninti_One/anzsee2012-blackwell-dollerygrantplaceshaping)

Blackwell B and B Dollery. 2012c. A social-economic framework for assessing enduring value from mining for remote communities. Australian and New Zealand Society for Ecological Economics 2012 Conference - Green Growth or De-Growth? 12-15 November. Bond University, Queensland. Accessed 21 August 2013 from: [http://www.slideshare.net/Ninti\\_One/anzsee2012-blackwell-dollerysocioeconomicframework](http://www.slideshare.net/Ninti_One/anzsee2012-blackwell-dollerysocioeconomicframework)

Blackwell B. 2012d. Enduring Community Value: Tracking and Mapping The Flow of Money from Mines. April presentation to UNE Business School and AARES Armidale Branch. Accessed 18 December 2012 from:

[http://crc-rep.com/sites/default/files/upload/aares\\_armidale\\_and\\_bepp\\_presentation\\_v3.pdf](http://crc-rep.com/sites/default/files/upload/aares_armidale_and_bepp_presentation_v3.pdf)

Roberston, S. 2013. Mine Lifecycle Planning and Enduring Community Value. Research Higher Degree Proposal Presentation to UNE, 28 May, UNE Business School, Armidale.



## Seminar Series



**Dr George Chen**  
Seminar Coordinator

Ms Leanne White presented “Understanding UNE’s Organisation Culture: A Clipper Ship Navigating the Cultural Archipelago” in the UNEBS Seminar on 9 August. The presentation was based on her Masters Dissertation and provided a snapshot of UNE’s unique corporate culture. This interesting topic attracted not only academics within the School, but also audience across the university. The main conclusion of the seminar was that “an accurate, sensitively constructed organisational snapshot could become a springboard for positive change, allowing for culturally appropriate internal and external communication strategies to be developed to engage with, inform and ‘listen to’ the community – and then to steer it forwards on a change journey to align organisational culture with corporate direction.” Interesting conversations continued in the Old EBL Café with

delicious cakes provided by Lou Conway from UNE Business School.



Dr. Michael Kortt from Southern Cross University presented a co-authored paper (with Ms. Simone De Souza and Professor Brian Dollery from UNE) in the UNEBS Seminar on 9 August. The topic was on Should metropolitan New South Wales councils be amalgamated? Contrary to the claim that bigger is cheaper in local government service delivery, the study concluded that, “on balance, there is limited evidence in support of scale economies. Thus, from a policy perspective, there is no reason to believe that the



## Michigan State University

Dr Nam Hoang attended a summer school and workshop on “New developments on Panel Data Methods” at University of Mainz, Germany, 18-24 August. The summer school was taught by Professor Jeffrey Wooldridge - Michigan State University. From 28 July - 3 August, Dr. Nam Hoang also attended a summer school at the University of Salento, Italy on “Computational Macroeconometrics

- programming in Matlab” taught by Professor Ulrich Woitek - University of Zurich.



proposed program of structural reform will result in significant cost-savings among NSW metropolitan councils.” Earlier that morning, Michael also launched a co-authored book with Professor Brian Dollery and Dr. Bligh Grant from UNE Business School.

### September Seminars:

**10:** Professor Steve Burdon, “How can Australia gain from innovation with Asia?”, LT5 @ 12pm.

**20:** Enactus UNE Team, LT5 @ 1pm.

**26:** Professor Oscar Cacho and Professor Abbas Valadkhani, “How to Get Published”, LT4 @ 2pm.

**27:** Professor Jenny Moon, “UNE Business School Reflective Learning Part 1”, LT3 @ 10am to 1pm.

**27:** Honours in Economics Seminar, LT5 @ 2pm.

## Calendar

### September

2 T2 lectures recommence

30 School Meeting

### October

3 R&RT Committee Meeting

4 T2 lectures end

8 T2 exams start

13 Mining in a Sustainable World Conference

21 School Meeting

21 T2 exams end

25 T3 orientation day

26 Graduation

28 T3 lectures start

31 R&RT Committee Meeting

### November

11 ANZSEE Conference

18 School Meeting

21 R&RT Committee Meeting

## EDC Update



Sue Whale

Ed Development  
& Communications  
Team Leader

Last week I sent an announcement about a change in direction to the Courseware Redevelopment project. I have posted this on our blog in case you missed it. It doesn't impact UNEBS for Trimester 3, as the EDC team was already planning to action any enhancement requests in-house for this teaching period. We will adopt the

process of talking to every coordinator regarding potential enhancements in units each Trimester. Units that are underway in the Courseware Project will be finalised, so the majority of requested enhancements (through Cubic) will be completed by end of October. There will be information sessions about the review process, and we will circulate further information and documentation as we receive it.

### uneOpen

We have two new units to be offered through uneOpen in Trimester 3 - GSB724 and GSB728. These units will offer advanced standing into the Master of Business, if participants opt to sit the challenge exam.

In response to the Strategic Planning Day, Alana has been working on a Showcase unit for students. This

includes snippets from the various discipline areas and is intended to be used as both a marketing tool, and a space where students can experience a 'taste' of different units. Alana will soon be asking for feedback on this, and we will 'present' it in our next Showcase event.

The Learning Innovations Hub (LIH) have recently recruited several new staff to complete the restructure undertaken earlier this year. We hope to have some of these present at our next Showcase event as well.

The UNE Web pages are soon to be migrated to a new CMS. Tim and Llara have been actively involved in mapping this process. The migration will impact updates to the Web - Tim will be circulating information regarding the web migration as this progresses.

## Online Learning

In early August Sue Whale attended the Institute for Emerging Leaders in Online Learning (IELOL) immersion program at Penn State University, as part of a blended leadership development program sponsored by Penn State and the Sloan Consortium. Participants were from Europe, the United States, Australia and Singapore and from a wide variety of institutional positions relating to online learning.





# HSC Study Day

The 2013 UNE HSC Study Day for Business Studies, Economics and Legal Studies was held on Monday 3 June.

Twenty-eight high schools registered with approximately 300 students in total.

The three presenters for the day were John Andrews (Legal Studies), Mohall Dhall (Business Studies) and Peter Kennedy (Economics), highly respected presenters and authors who specialize in the HSC curriculum and targeted study skills. The feedback from those present was very positive.

The day commenced at 9.00 am with the three streams running simultaneously, which allowed students to move between the subject areas if required. There were four sessions per subject area.





**Bernie Groen**  
Senior IT Officer

## Windows XP End of Life – April 8, 2014

Is your UNE owned computer still running Windows XP?

Windows XP will not be supported by Microsoft after the 8th April 2014. This may result in problems using your computer on the UNE network and access to various mapped drives and resources, as well as potential security issues as there will be no more updates, patches and drivers.

Most computers in the school should be running Windows 7 and the few that are not will need to be changed from XP. Some computers will be too old and will need to be replaced.

How to check which version of Windows your computer has:

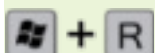
Normally in the left corner of the computer screen you should have one of the following icons.



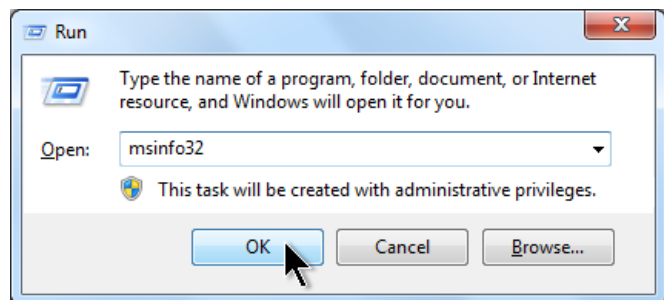
Windows 7      Windows XP      Windows (various)

If you are having trouble identifying which version you are running follow the instructions below:

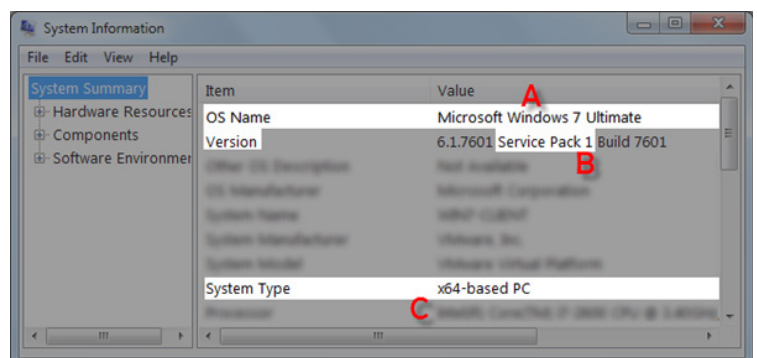
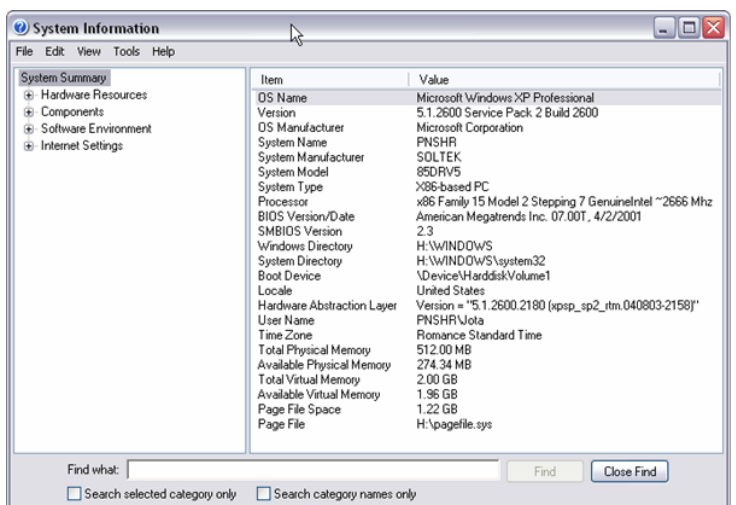
1. To open a run box press the Windows key and the R key



2. Type msinfo32 and click OK...



You should then get a screen similar to the ones below showing the version of Windows you have



If you have Windows 7 you are ok and need not do anything. If you have XP or another Windows operating system you will need to contact EBL computer support at [eb1-it@une.edu.au](mailto:eb1-it@une.edu.au) with your details and arrangements will be made to change your computer to Windows 7 as time permits. It is anticipated that all UNE owned computer XP installations in the school will be changed to Windows 7 by the end of 2013.



# Research Outcomes

---

## Book Chapters

Stenberg, L.C., and Siriwardana, M. (2012) Effects of a Unilateral Tariff Liberalisation on Forestry Products and Trade in Australia: An Economic Analysis Using the GTAP Model, (Ed.) C. A. Okia, *Global Perspectives on Sustainable Forest Management*, Tech Publishers, Rijeka, Croatia.

## Journal Articles

Blackwell, B. and Dollery, B. E. (2013) Resource Taxation and Remote Aboriginal Expenditure, *Economic Papers*, 2013 (in print).

Drew, J.J. and Dollery, B. E. (2013) Is the Game Worth the Candle? Estimating the impact of the proposed Greater Sydney Metropolitan amalgamations on municipal financial sustainability, *Public Money and Management*, (in print).

Dollery, B. E. and Grant, B. (2013) Introduction, (Eds) Dollery, B. and Grant, B. *Public Finance and Management, Special Edition: Symposium on Amalgamation and Financial Sustainability, Local Government: Part 2*, 13(2), pp. 142-147.

Dollery, B. E., Grant, B. and Kortt, M. (2013) An evaluation of amalgamation and financial viability in Australian local government, (Eds) Dollery, B. and Grant, B. *Public Finance and Management, Special Edition: Symposium on Amalgamation and Financial Sustainability, Local Government: Part 2*, 13(2), pp. 215-238.

Kortt, M.A., Dollery, B.E., Grant B. (2013) The Relationship between Religious Affiliation and Returns to Human Capital for Women, *Economic Papers*, 2013 (in print).

Meng, X., Siriwardana, M. , and Pham, T. (2013) A CGE assessment of Singapore's tourism policies, *Tourism Management*, 34, pp. 25-36.

Meng, S., Siriwardana, M., and McNeill, J. (2013) The Environmental and Economic Impact of the Carbon Tax in Australia, *Environmental and Resource Economics*, 54, pp. 313-332.

Meng, X., Siriwardana, M., and McNeill, J. (2012) The Impact of the Global Financial Crisis on the Asia-Pacific Region, *Academy of Taiwan Business Management Review*, 8, pp. 1-8.

Nahar, B. and Siriwardana, M. (2013) Trade Opening, Fiscal Reforms, Poverty, and Inequality: A CGE Analysis for Bangladesh, *The Developing Economies*, 51, pp. 145-85.

Sajeewani, D., Siriwardana, M. and McNeill, J. (2013) Australia's Energy Sector: Implications for Greenhouse Gas Emissions and Mitigation Policies", *Academy of Taiwan Business Management Review*, 9, pp.10-21.

## Conference Papers

Godwin, J., Holmes, N., Kelton-Chambers, D. & Belmont, W. (2013) First Year Advisors at UNE: An Embedded Approach to Student Learning Support, *International Conference on Enhancing Student Success: A Global Perspective*, Maastricht, The Netherlands.

Duncan, D.J., Riley, D. and Edwards, J. (2013) The Bullying of Staff in Catholic Schools- Both Paradox and Possibility, *6th International Conference on Catholic Educational Leadership*, Sofitel Sydney, 12-14 August.

Duncan, D.J., Riley, D. and Edwards, J. (2013) Bullying of Staff in Schools: Summary of Research, *Independent Education Union Support Staff Conference*, Mecure Sydney Hotel, 23 August.

Riley, D., Duncan, D.J. and Edwards, J. (2012) Ethical leadership in Tackling Bullying of Staff in Schools, *ACU/UCEA 17th Annual Values and Leadership Conference*, Brisbane Convention Centre, Brisbane, 1-2 October.

## Keynote Address

Dollery, B.E. (2013) Regional Collaboration in Local Government, address presented to *North Sydney Regional Organisation of Councils (NSROC) Annual Conference*, Sydney, 1 August 2013.

# Honorary Appointments

---

## Dr Geoffrey Kraine

Adjunct Research Fellow, Management Discipline, 29 June 2013 - 29 June 2014.

## Conference Reports

Successful conference travel grant recipients report on their recent conference attendances.

### 2013 SEAANZ Conference: A Big Success



**Associate Professor  
Bernice Kotey**

The SEAANZ conference was a big success. The board of the International Council of Small Business (ICSB), the parent body of SEAANZ, wrote to congratulate SEAANZ on the success of the conference. The President of ICSB, Professor Jeff Alves who attended the conference, was very impressed with the ability of the SEAANZ Board to bring together practitioners, policy makers and academics to consider issues affecting small and medium firms in Australia. The ICSB Board, in an email to the President of SEAANZ, Professor Tim Mazzarol, stated that, "We want to showcase SEAANZ to all of the ICSB membership!" Similar accolades came from practitioners and policy makers who participated in the conference i.e. the State and Federal Commissioners of Small Business, the President of the Council of Small Business of Australia (COSBOA), and representations from Fair Work Australia and the Australian Bureau of Statistics (ABS). Students and academic presenters applauded the feedback they received from the conference. A lot of the praise for the success of the conference must go to the President of SEAANZ whose vision and strategy for SEAANZ and extensive network enabled the Board to host a stimulating conference. I feel privileged to belong to a dynamic group that will make a difference to SME development in Australia and hope UNE Business School will take steps to strengthen its alliance with the association.

SEAANZ has already moved to firm strategic alliances with the various organisations represented at the conference. In particular, we will work closely with the ABS to develop and disseminate data on SMEs and encourage use of the data in publications.

The SEAANZ Board expressed its appreciation for the sponsorship from UNE Business School. UNE Business School was also acknowledged in all materials used for the conference. The President of SEAANZ expressed a desire to see the alliance with UNE Business School continue in the future. I have been asked to Chair the 2014 SEAANZ conference for which planning has already started.

I will like to take the opportunity to acknowledge and thank all UNE Business School colleagues who assisted in various ways with the conference. Dr Omar Al Farooque reviewed papers, attended and chaired a session at the conference and Drs Lou Conway, Fredy Valenzuela, Sujana Adapa, Bernard Bollen, John Anderson and Leopold Bayerlein all reviewed papers for the conference. Thank you very much for your support. SEAANZ will publicize your efforts by publishing this article on its website and on its LinkedIn and Facebook sites.

The picture shows Associate Professor Bernice Kotey pointing out one of the best paper prizes to the President of the Independent Contractors Association (ICA) who is on the SEAANZ Board. Behind them are members of the panel for the Indigenous Business session.



### UNE Business School *News*

To view earlier issues:

<http://www.une.edu.au/business-school/newsletters/index.php>

Send your contributions to:

[kflack2@une.edu.au](mailto:kflack2@une.edu.au)





# ANZSEE Conference 2013

Canberra, Australia | 11-14 November, 2013

**Opportunities for the Critical Decade**  
Enhancing well-being within planetary boundaries

## ANZSEE Conference Deadline Extended

With so many enquiries and high interest, the ANZSEE Conference Committee has decided to **extend the abstract submission deadline for the 2013 ANZSEE Conference to 23rd August 2013.**

Nominations are now open for the **ANZSEE PhD Prize in Ecological Economics**, which recognizes the most significant thesis in the field of ecological economics during 2012-2013.

For more information, visit the website: [www.anzsee.org](http://www.anzsee.org)

Please contact the conference secretariat if there are any concerns with the abstract submission deadline, via e-mail [anzsee2013@gmail.com](mailto:anzsee2013@gmail.com) or phone **61 2 6281 6624**.

## New Keynote Speakers Announced

We are delighted to announce [additional keynote speakers](#) for ANZSEE 2013:



Prof. Richard Wilkinson  
University of Nottingham  
Co-author of *The Spirit Level*



Dipak Gyawali  
UNU-IAS/UNESCO  
Visiting Professor on Water and Cultural Diversity



Prof. Jon Altman  
ARC Australian Professorial Fellow  
Centre for Aboriginal Economic Policy Research



Prof. Bob Costanza  
Chair in Public Policy at Crawford School of Public Policy, ANU



Dr. Juliet Christian-Smith  
Senior Research Associate  
Pacific Institute's Water Program



Prof. Chris Ansell  
The Charles and Louise Travers  
Department of Political Science,  
University of California Berkeley



Prof. John Thwaites  
Chair National Sustainability Council,  
Climateworks Australia, Monash Sustainability Institute



Dr. Manuka Henare  
Director, Mira Szásky Research Centre,  
University of Auckland

**Registration is now open: secure your place at the discounted early bird rate**

Full details on registration [can be found on the conference website](#).

Early bird registration fees close on 9<sup>th</sup> September 2013.

Supported by



Australian Government  
Department of Sustainability, Environment,  
Water, Population and Communities



Follow ANZSEE on: Twitter [@anzsee](#) | [Facebook](#) | [LinkedIn](#) | [www.anzsee.org](http://www.anzsee.org)