

The Museum of Antiquities

2016



une
University of
New England

Newsletter #2
Editor: Dr Bronwyn Hopwood

une
University of
New England

A Humanities
Research Centre

Engage

Explore the MoA:
programs, exhibits,
& much, much
more...

Page 2

Innovate

Discover just some of
the projects underway
at the MoA

Page 3

Imagine

Preserving the Past
Building the Future:
be part of
something great

Page 4



Engage

The Museum of Antiquities

Time to Explore

Discover just some of
UNEMA's programs



Visit

The Museum of Antiquities is located in the foyer of the UNE Arts Building. Open: weekdays 9:30am to 4:30pm. Entry is Free.

Closed: *Weekends, Public Holidays, and December 24th to January 1st inclusive.*



Tours

UNEMA welcomes school and community groups to explore the Museum and is happy to provide guided tours. To organise a tour contact the School of Humanities on 6773 2300

Object in Focus

Greek glass alabastron

2nd-1st centuries BC

Height: 110mm

MA 2016.18.1

Photograph by Charles Ede Ltd

This core-formed glass alabastron has an elongated ovoid body of dark blue glass, and combed trailings in light blue and white glass. The white trailing continues in a widely spaced band around the elongated neck and on the edge of the vessel's lip. Two suspension loops



of dark blue glass have been added to the shoulders of the alabastron.

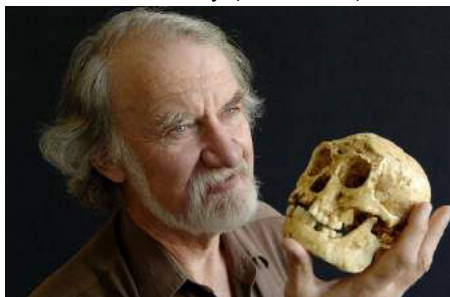
Core-formed glass vessels began to be made c.1,600 BC and were widely produced until the discovery of glass-blowing in the 1st century BC. Alabastra of ceramic and glass were used to hold precious perfumes or oil.

This artefact was purchased to commemorate the founder of the UNE Museum of Antiquities Dr Maurice Kelly, and the unveiling ceremony held on 1st September 2016.

M
K

The Maurice Kelly Lecture

Each year the Maurice Kelly Lecture is presented by a distinguished researcher on invitation from the Museum of Antiquities. The lecture series, established in 1997, honours the founder of the Museum, classicist Dr Maurice Kelly (1919-2011).



This year, the 20th Annual Lecture was presented by Dr Adam Brumm, Senior Research Fellow and Head of Archaeology, Griffith University.



Adam's topic "*In the Spirit of Morwood: The Search for the origin of Homo floresiensis*" reflected on the efforts over the past decade to realise one of Mike Morwood's greatest ambitions: to uncover fossil evidence for the evolution of *Homo floresiensis*.

The Charles Ede Prize

The Charles Ede Essay Prize was established in 1999 by James Ede in memory of his father. In 1947 Charles Ede founded the *Folio Society*, and in 1971 he founded *Charles Ede Ltd*, a leading London based firm dealing with Classical and pre-Classical antiquities from Cyprus, Egypt, Greece, Italy, and the Near East. The essay prize is awarded for the best essay by a UNE student on Museums or museum collections.



Innovate

Discover just some of the projects at the MoA

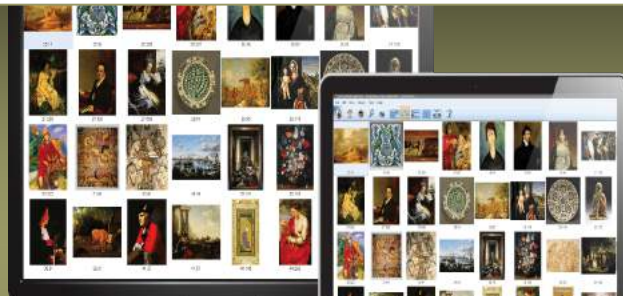
We've Got The Touch

UNEMA's new M&G NSW sponsored touchscreen was officially launched on 1st September 2016 and has already been put to good use.

With the permission of Johns Hopkins Archaeological Museum, UNEMA used the touchscreen to screen JHAM's experimental ceramics workshop documentary "*The Mysteries of the Kylix*" at a recent workshop held in UNEMA for Armidale's Weemala Pottery Group. The success of the Weemala workshop was later reported on John Hopkins Archaeological Museum's Facebook page:



"Perfecting Past Perfect"



2016 M&G NSW VIM Small Grant

UNEMA is delighted to announce that its project "*Perfecting Past Perfect*" has been awarded a 2016 M&G NSW VIM Small Grant. This project seeks to improve *PastPerfect*, the Museum's Collections Management System, by engaging a professional photographer to produce publication quality photos for inclusion in the collections management system. UNEMA will be working with photographer David Elkins in early 2016.

UNEMA Weemala Pottery Workshop

UNEMA was delighted to host Armidale's Weemala Pottery Group in July 2016. Here are just some of the creations inspired by the UNEMA Workshop:



Digital Archive of Cypriot Artefacts

In 2016 UNEMA was contacted by leading authority on Cypriot archaeology, Prof. Vassos Karageorghis, of the STARC Research Centre, Cypriot Institute, to collaborate on the creation of a digital database of all international collections of Cypriot antiquities.

In Trimester One, undergraduate students Helen Bagnell and Issy Hanlon, signed up to complete a WORK300 project with UNEMA to support this enterprise. Seven months and more than 581 objects later, the project is nearing completion.



A digital record of all Cypriot material at UNEMA has been compiled, and is undergoing verification for reporting.



Photos Courtesy of Rick, Leah, & John Weemala Pottery Group 2016

VC's Scholars Schools Program Project

In 2015 UNEMA won a *VC's Scholars Special Grant* for a collaborative project, run by Prof. Martin Gibbs and Dr. Bronwyn Hopwood, to send three VC's Scholars to Sydney in 2016 to investigate the successful schools programs of the Nicholson Museum (USYD) and Museum of Ancient Cultures (MQU), and to apply what they learnt to creating a permanent schools program at UNEMA.

Schools Programs inspire children to explore the ancient and modern world using imaginative, hands-on activities; and engage high school students through exhibitions and activities to deepen their interest in history and culture, and to develop critical thinking and interpretative skills in preparation for entry into university.



Michelle Richards
(ANCH & ARPA)



Nathaniel Agnew
(CHEM & CLLA)



Stephen Palmer
(CLLA & HIST)

Meet Our VC's Scholars

- * Nathaniel Agnew, 3rd Yr. BASC, majoring in Classics & Chemistry
- * Stephen Palmer, 3rd Yr. BA, majoring in Classical Languages & History
- * Michelle Richards, 3rd Yr. BA, majoring in Ancient History & Archaeology

Friends of the Museum



Like to stay in touch? Want to get involved? Find out how! Contact:

The Museum Committee
museumofantiquities@une.edu.au
+612 6773 2225

Support UNEMA



If you would like to learn more about how you can support the Museum of Antiquities please contact either:

The Museum Committee
museumofantiquities@une.edu.au
+612 6773 2225

or the

UNE Donor Relations Officer
Ms. Kate Jones
kjones25@une.edu.au
+612 6773 3876

In 2019 UNEMA Will Turn 60

The Museum of Antiquities (UNEMA) in the School of Humanities at the University of New England is the oldest regional, and second oldest museum of antiquities in mainland Australia. Established in 1959 by Classicist Dr Maurice Kelly (1919-2011), ably assisted by UNE's Registrar Mr. Tom Lamble (1926-1985), its collections encompass the Ancient Mediterranean and Near East, as well as ethnographic material from

Australia, South East Asia, Africa, New Guinea, the Pacific Region, and Mesoamerica. UNEMA seeks to promote interest in the history of peoples through the ages, and serves as a centre of excellence for the research, teaching, and public programs of the School of Humanities. 2019 will mark the Museum's 60th Anniversary and the 40th Annual Conference of the Australasian Society for Classical

Studies, to be hosted by the School of Humanities at the University of New England. Preparations have already begun. To find out how to sponsor a student to attend this conference and anniversary event, contact: *The Office of Advancement*: +612 6773 2318 or donate online: www.une.edu.au/alumni/give-to-une/give-now to the "CAH On Campus Experience Grant" FL1433.

The website for the Museum of Antiquities can be found at:

<http://www.une.edu.au/about-une/academic-schools/school-of-humanities/about-us/museum-of-antiquities>