

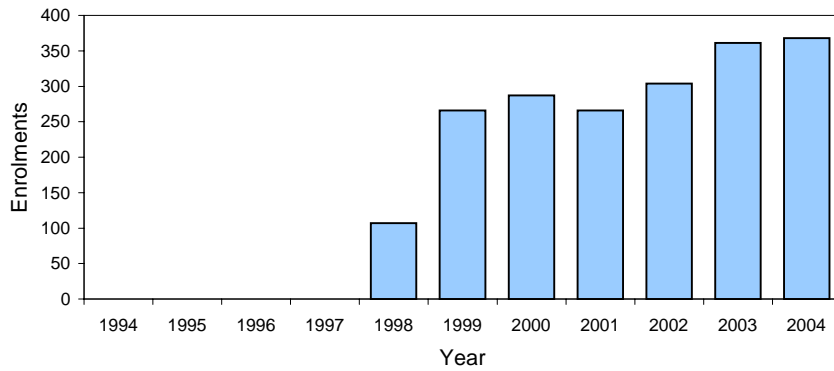
COURSE REVIEW

Bachelor of Teaching (Early Childhood)

1999-2004

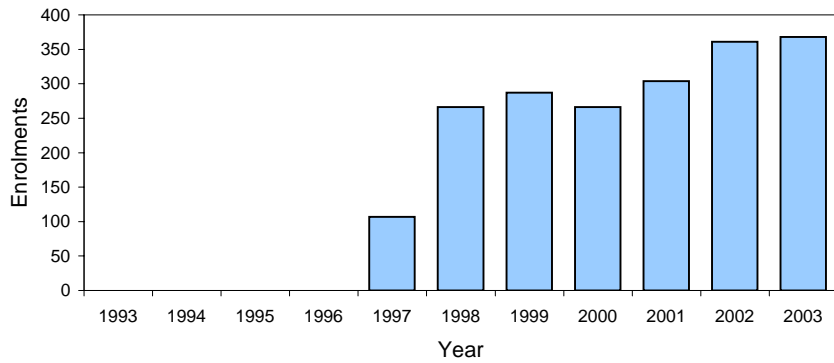
Enrolments at 31 March

Year	Armidale				Other Locations		Total
	Commencing		Continuing		Commencing	Continuing	
	External	Internal	External	Internal			
1994							0
1995							0
1996							0
1997							0
1998	107			97			107
1999	169			154			266
2000	133			154			287
2001	102			164			266
2002	158			146			304
2003	154			207			361
2004	160			208			368



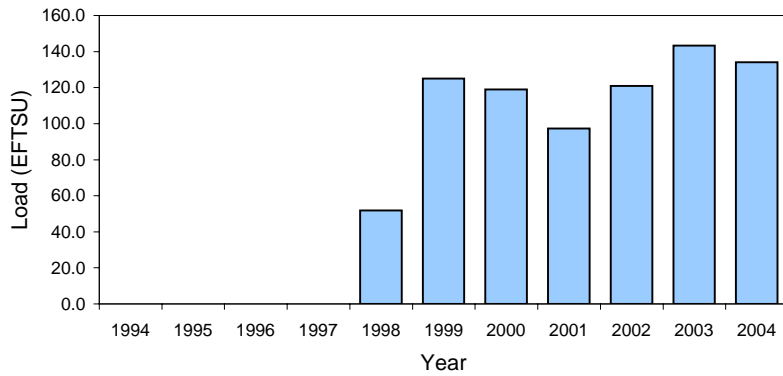
Enrolments at 31 August

Year	Armidale				Other Locations		Total
	Commencing		Continuing		Commencing	Continuing	
	External	Internal	External	Internal			
1993							0
1994							0
1995							0
1996							0
1997	107			97			107
1998	169			154			266
1999	133			154			287
2000	102			164			266
2001	158			146			304
2002	154			207			361
2003	160			208			368



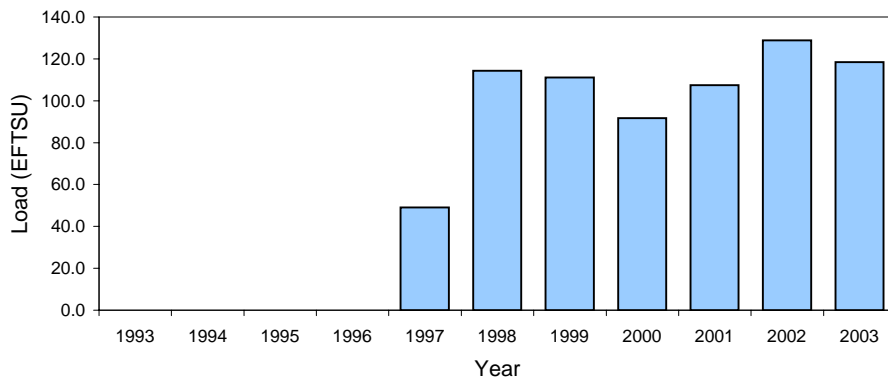
Load at 31 March

Year	Armidale		Other Locations	Total
	External	Internal		
1994				0.0
1995				0.0
1996				0.0
1997				0.0
1998	51.9			51.9
1999	125.0			125.0
2000	119.0			119.0
2001	97.4			97.4
2002	121.0			121.0
2003	143.3			143.3
2004	134.0			134.0



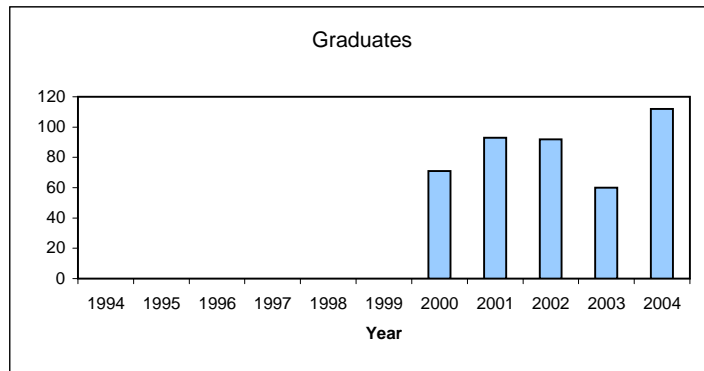
Load at 31 August

Year	Armidale			Other Locations	Total
	External	Internal	No data		
1993					0.0
1994					0.0
1995					0.0
1996					0.0
1997	49.0				49.0
1998	114.3				114.3
1999	111.1				111.1
2000	91.8				91.8
2001	107.5				107.5
2002	128.9				128.9
2003	118.5				118.5



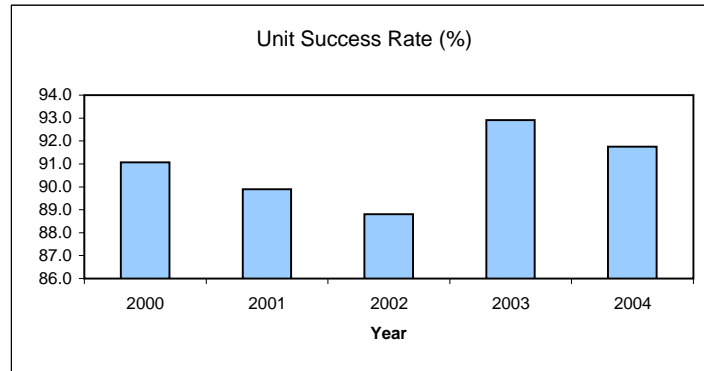
Graduations (year reported to DEST)

Year	Graduates
1994	
1995	
1996	
1997	
1998	
1999	
2000	71
2001	93
2002	92
2003	60
2004	112
Total	428



Unit success rate (USR)

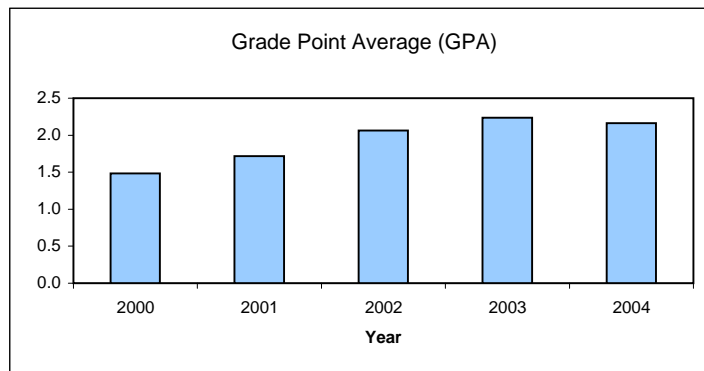
Year	USR (%)
2000	91.1
2001	89.9
2002	88.8
2003	92.9
2004	91.8



Unit success rate indicates the proportion of student load in units, as of the census date, that have a successful outcome (pass or better).

Grade point average (GPA)

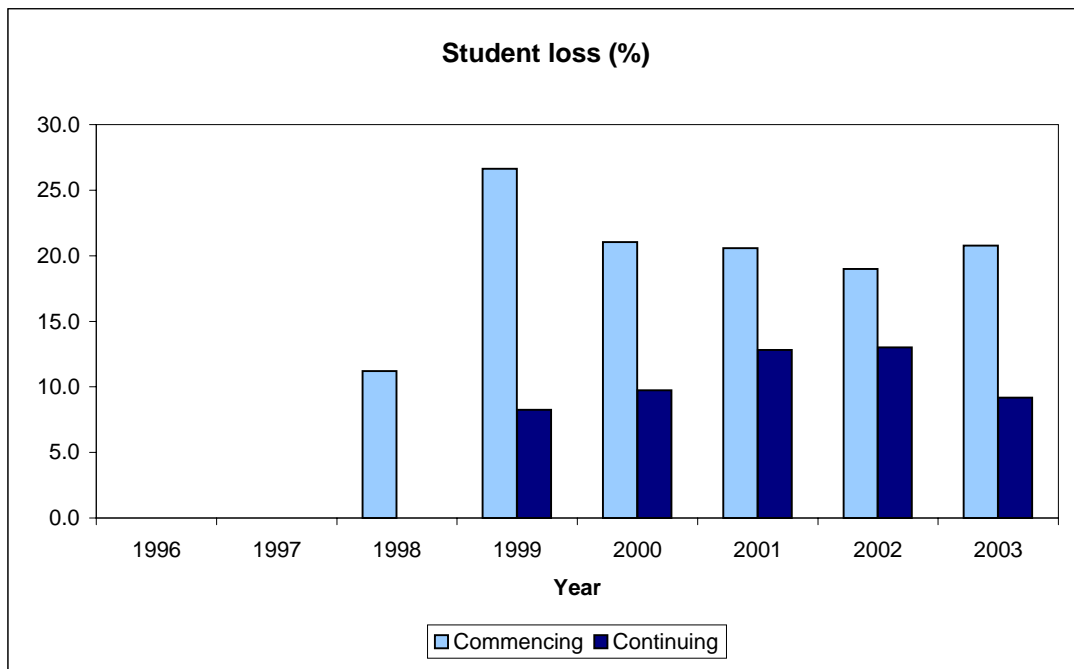
Year	GPA
2000	1.5
2001	1.7
2002	2.1
2003	2.2
2004	2.2



Student loss (by course)

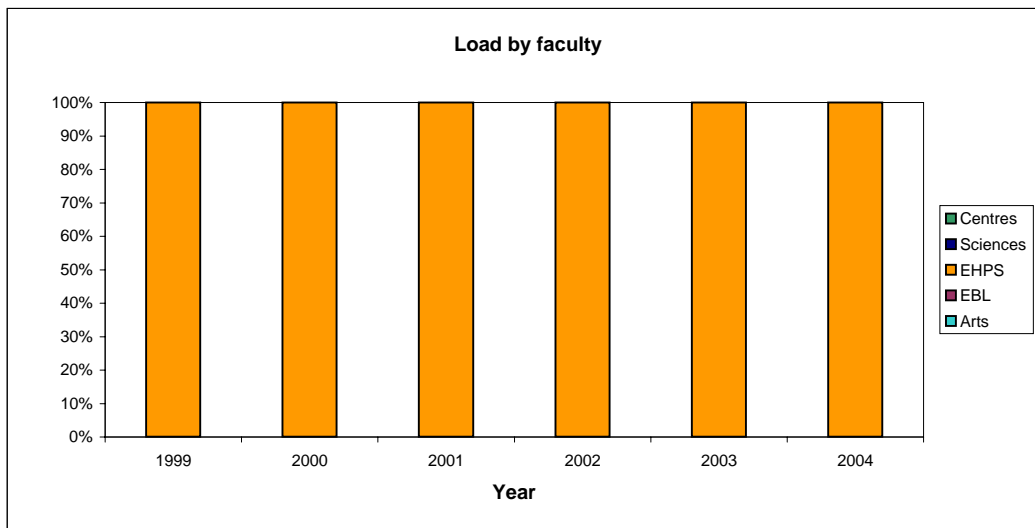
This table shows the outcome for a cohort of enrolled students in the following year. Students can continue in the same course, graduate from the course, enrol in a new course at UNE or they may be lost (not appear as an enrolment). Note that external students who skip a year will appear as a loss.

	Year	Outcome				Total Enrolments	% Lost
		Continuing	Graduated	New Course	Lost		
Commencing	1996					0	-
	1997					0	-
	1998	95			12	107	11.2
	1999	121	3		45	169	26.6
	2000	102	3		28	133	21.1
	2001	78	3		21	102	20.6
	2002	123	5		30	158	19.0
	2003	119	3		32	154	20.8
Continuing	1996					0	-
	1997					0	-
	1998					0	-
	1999	21	68		8	97	8.2
	2000	49	90		15	154	9.7
	2001	55	88		21	164	12.8
	2002	73	54		19	146	13.0
	2003	80	107	1	19	207	9.2



Load (EFTSU) by school teaching into course (at 31 March)

Faculty	AOU	School	1999	2000	2001	2002	2003	2004
Arts								
<i>Faculty total</i>								
EBL								
<i>Faculty total</i>								
EHPS	164	Administration & Training	3.7	4.7	7.5			
	165	Curriculum Studies		8.7	9.1			
	166	Education Studies	121.3	99.4	74.5			
	168	Prof. Develop. & Leadership				115.8	135.7	126.3
	902	Practice Teaching/Practicum		6.1	6.2	5.2	7.5	7.8
		<i>Faculty total</i>	125.0	119.0	97.4	121.0	143.3	134.0
Sciences								
<i>Faculty total</i>								
Centres								
<i>Faculty total</i>								
Total								

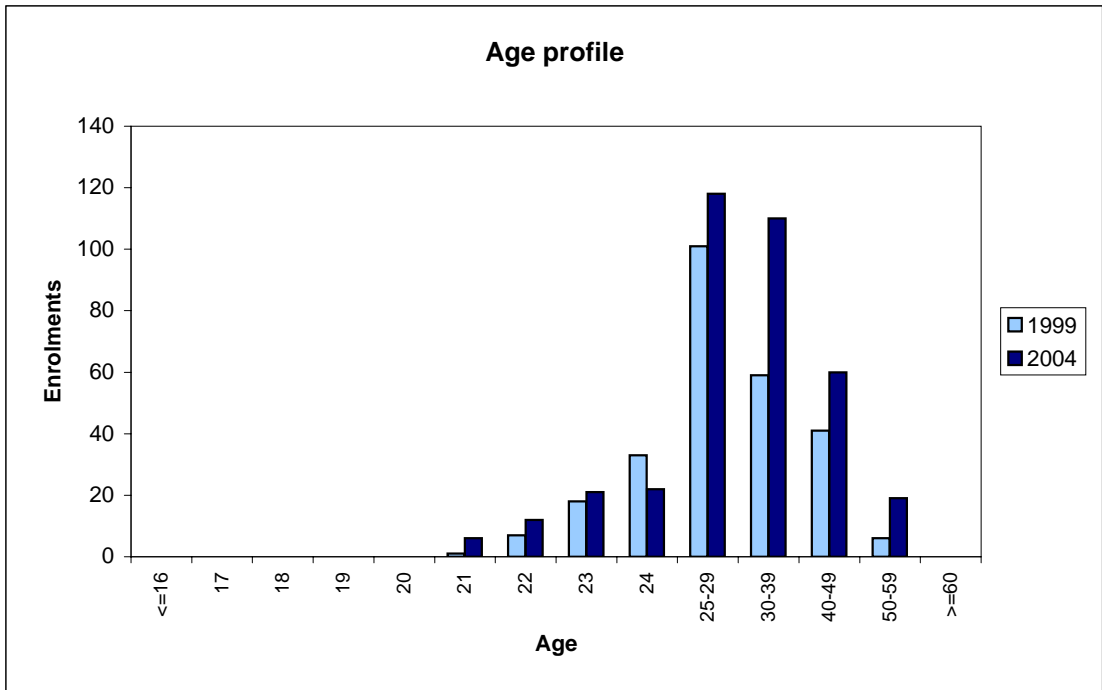


Enrolments by campus and citizenship (at 31 March)

Campus	Citizenship	2000	2001	2002	2003	2004
Armidale	Domestic	287	266	304	360	368
	International				1	
Total		287	266	304	361	368

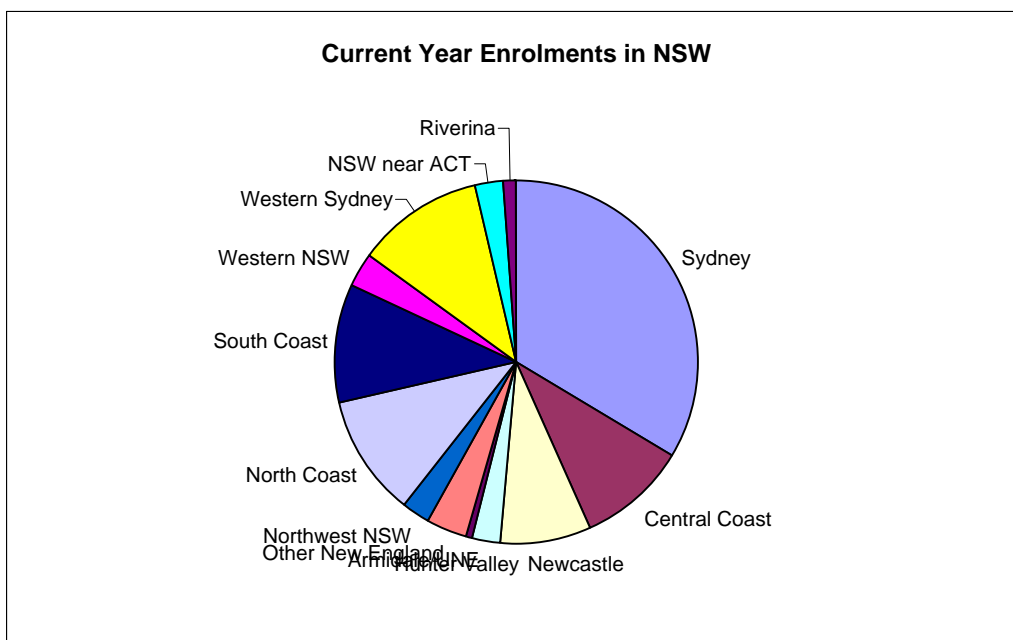
Age profile of students at 31 March

Age Group	1999	2000	2001	2002	2003	2004
<=16						
17						
18						
19						
20		1				
21	1	2	3	4	4	6
22	7	8	5	11	14	12
23	18	19	10	11	18	21
24	33	24	19	27	19	22
25-29	101	106	93	98	125	118
30-39	59	69	77	87	112	110
40-49	41	51	50	53	53	60
50-59	6	6	8	12	15	19
>=60		1	1	1	1	
Total	266	287	266	304	361	368



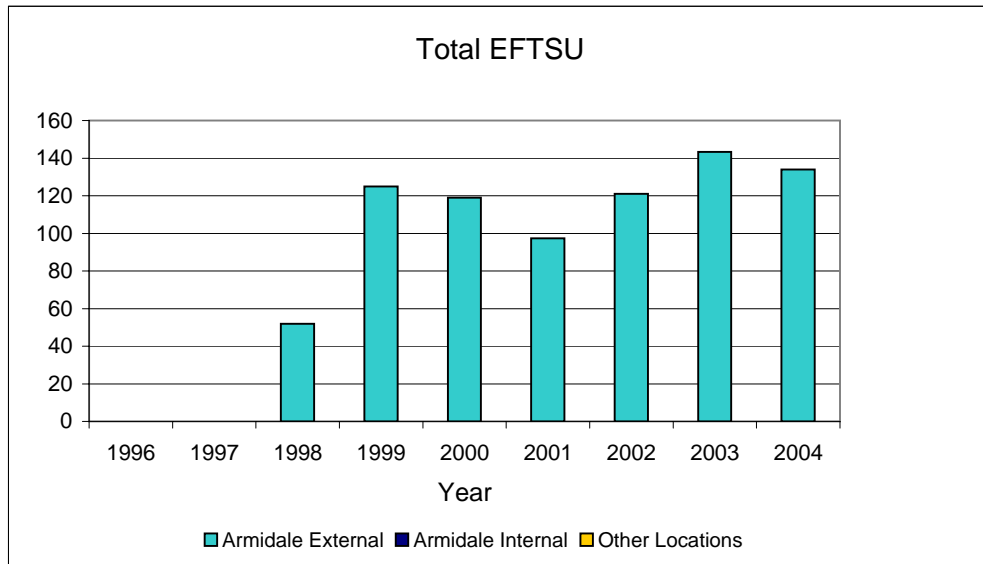
Origin of students based on home postcode at 31 March

State	Zone	1999	2000	2001	2002	2003	2004
NSW	Sydney	104	112	94	108	109	111
NSW	Central Coast	27	21	12	22	38	32
NSW	Newcastle	13	16	16	16	24	27
NSW	Hunter Valley	5	8	6	5	3	8
NSW	Armidale/UNE	8	5	3	3	3	2
NSW	Other New England	7	6	7	11	10	12
NSW	Northwest NSW	5	6	7	4	7	8
NSW	North Coast	21	25	24	30	37	36
NSW	South Coast	20	25	21	20	28	35
NSW	Western NSW	12	10	8	10	8	10
NSW	Western Sydney	22	23	28	30	39	38
NSW	NSW near ACT	2	4	1	5	8	8
NSW	Riverina	7	6	7	9	7	4
ACT	ACT	2		2	2	3	2
QLD	Brisbane	3	7	8	3	4	3
QLD	QLD south coast	8	10	10	10	13	8
QLD	Darling Downs				3	4	5
QLD	Central QLD		1	2			
QLD	QLD central coast						
QLD	QLD north coast					1	
QLD	Carpentaria			1			
VIC	Melbourne			2	1	2	4
VIC	Victoria		2	5	5	3	7
TAS	Tasmania					1	1
SA	South Australia			1		3	3
NT	Northern Territory				2	1	1
WA	Western Australia			1	4	4	2
	Overseas				1	1	1
	Total	266	287	266	304	361	368

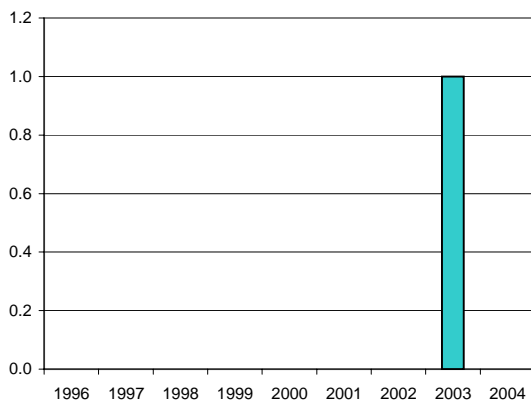


Student Load by Degree at 31 March, 2004

Bachelor of Teaching (Early Childhood)									
	1996	1997	1998	1999	2000	2001	2002	2003	2004
Armidale External (EFTSU)									
Govt subsidised			51.9	125.0	119.0	97.4	121.0	142.3	134.0
Domestic Fee									
International								1.0	
Other									
Total load			51.9	125.0	119.0	97.4	121.0	143.3	134.0
Armidale Internal (EFTSU)									
Govt subsidised									
Domestic Fee									
International									
Other									
Total load									
Other Locations (EFTSU)									
Govt subsidised									
Domestic Fee									
International									
Other									
Total load									
Total EFTSU			51.9	125.0	119.0	97.4	121.0	143.3	134.0



International EFTSU



Domestic Fee-paying EFTSU

