
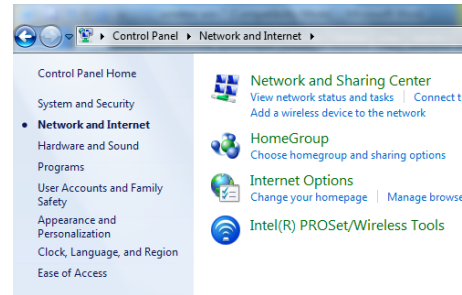


# ITD Fact File: *How to* **Connect to UNE Wireless** **Windows 7 & Vista** **Staff & Student**

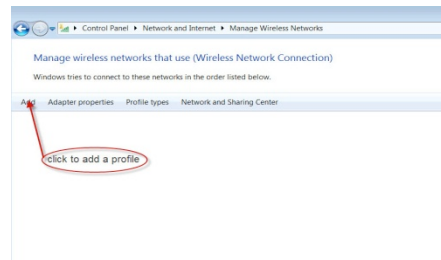
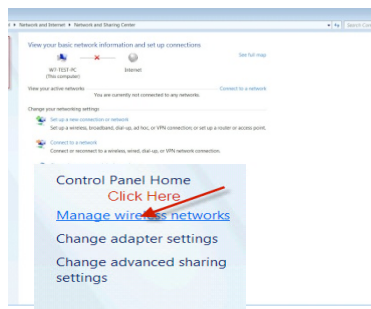


Information Technology Directorate – IT Service Desk  
 ITD Building C34  
 Email : [servicesdesk@une.edu.au](mailto:servicesdesk@une.edu.au)  
 Phone : (02) 6773 5000

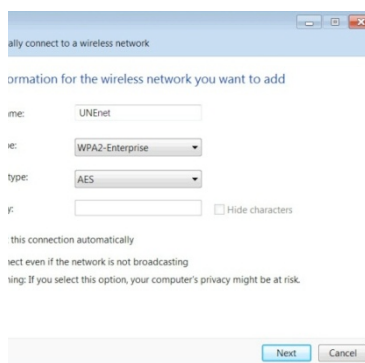
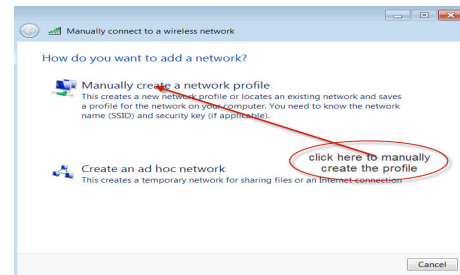
Click on the **Windows logo**  then  
**“Control Panel”, “Network and Internet”** and  
**“Network and Sharing Centre”**.



Click on **“Manage Wireless Networks”** then **“Add”**.



Click on **“Manually Create Network”**

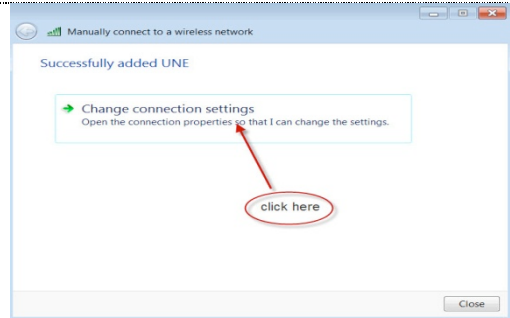


Network Name – **UNEnet**  
 Security Type – **WPA2-Enterprise**  
 Encryption Type – **AES**  
 Security Key – blank

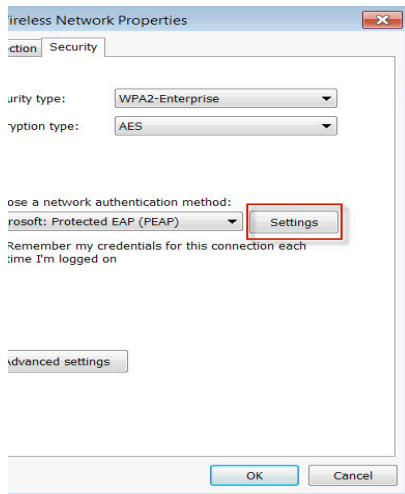
Start this connection automatically – **ticked**  
 Connect even if the network is not broadcasting – **un-ticked**

Click on **“Next”**.

Click on **“Change connection settings”**.



Click on the **Security** tab.



Security type – **WPA2-Enterprise**

Encryption type – **AES**

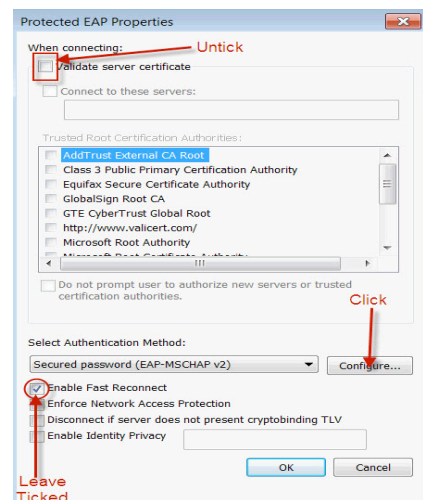
Choose a network authentication method – **Microsoft: Protected EAP (PEAP)**

Remember my credentials for this connections each time I'm logged on – **ticked**

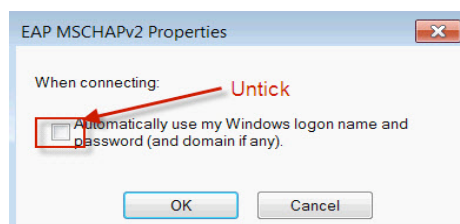
Click on "**Settings**".

- Validate server certificate – **un-ticked**
- Trusted Root Certification Authorities – **nothing** ticked
- Select Authentication Method – **Secured password (EAP-MSCHAP v2)**
- Enable Fast Reconnect – **ticked**
- Enforce Network Access Protection – **un-ticked**
- Disconnect if server does not present cryptobinding TLV – **un-ticked**
- Enable Identity Privacy – **un-ticked**

Click on "**Configure**".

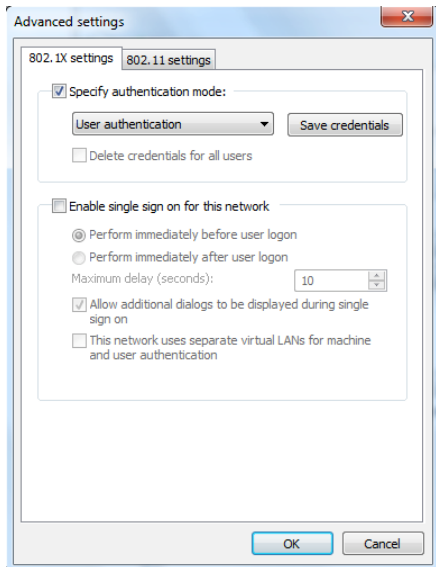
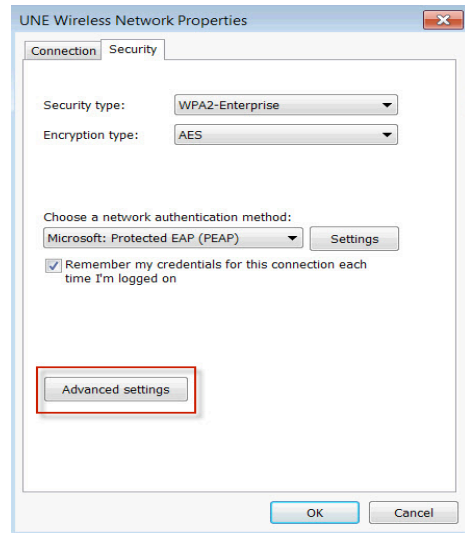


Automatically use my Windows logon name and password (and domain if any) – **un-ticked**



Click on "**OK**" twice.

In the UNE Wireless Network Properties window click on **“Advanced settings”**.



In the **802.1x settings tab**:  
Specify authentication mode – **ticked**  
Drop down box – **User authentication**

Click on **“Save Credentials”**.

User name – **your UNE username**  
Password – **your UNE password**

Click on **“OK”** until you are back at the Network and Sharing Centre and close.

You should now be connected.

