

# ITD Fact File: *How to* Connect to the **UNE Network** **Windows XP Service Pack 3** **Staff / Students**

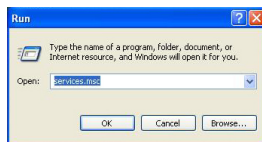


Information Technology Directorate – IT Service Desk  
ITD Building C34  
Email : [servicedesk@une.edu.au](mailto:servicedesk@une.edu.au)  
Phone : (02) 6773 5000

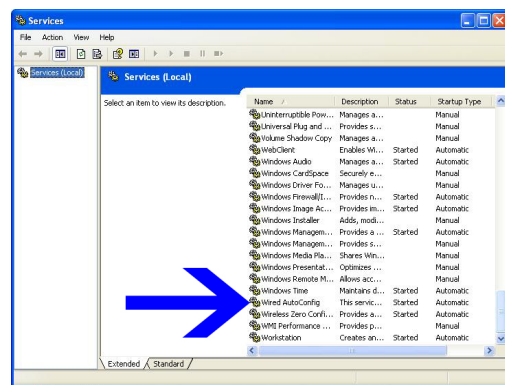
**Service Pack 3 is the minimum requirement to connect to the UNE Network using Windows XP. Update CDs can be obtained from the IT Service Desk or online – [http://software.une.edu.au/une-only/Windows\\_Service\\_Packs/WinXP/SP3/](http://software.une.edu.au/une-only/Windows_Service_Packs/WinXP/SP3/)**

1. Click on **“Start”** → **“Run”**

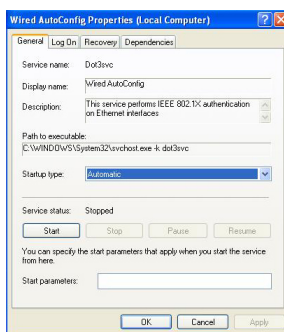
2. Type **“services.msc”** in the box. Click **“OK”**.



3. Scroll down until you find **“Wired AutoConfig”** and double click on it.



**Note:** **Windows 2000** only has **“Wireless AutoConfig”** option – choose this instead and continue following the steps below.



4. **“General”** tab  
Startup Type drop down box – **Automatic**

5. Click on **“Start”** and then **“OK”**.

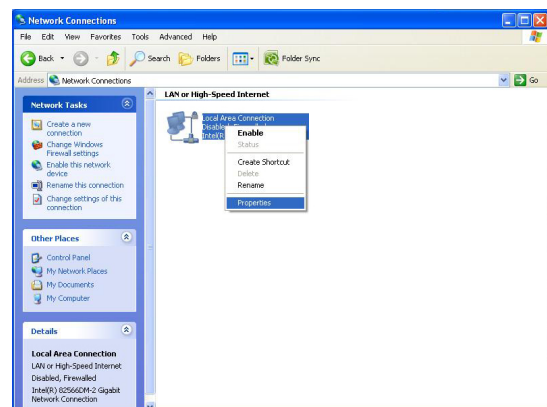
6. Close the **“Services”** window.

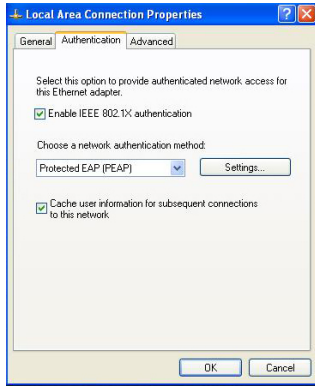
7. Click on **“Start”** → **“Control Panel”**.

8. Double click on **“Network Connections”**.

9. Right click on **“Local Area Connection”**  
(If the connection is disabled, click on **“Enable”**, then right click again)

10. Click on **“Properties”**.





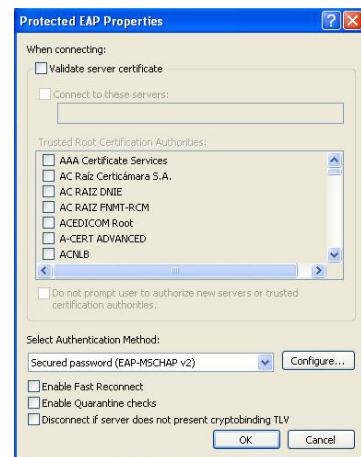
11. Click on the “**Authentication**” tab.

12. Enable IEEE 802.1x authentication – **ticked**  
Choose a network authentication method drop down box –  
**Microsoft: Protected EAP (PEAP)**  
Cache user information for subsequent connections to this network – **ticked**

13. Click on “**Settings**”.

14. Validate server certificate – **un-ticked**  
Trusted Root Certification Authorities – **nothing ticked**  
Select Authentication Method drop down box - **Secured password (EAP-MSCHAP v2)**  
Enable Fast Reconnect – **un-ticked**  
Enable Quarantine Checks – **un-ticked**  
Disconnect if server does not present cryptobinding TLV – **un-ticked**

15. Click on “**Configure**”.



16. If your computer is ON the UNE Domain – **ticked**  
If your computer is NOT on the UNE Domain – **un-ticked**

**If you are unsure, contact IT Service Desk**

16. Click “**OK**” until you are back to the “**Network Connections**” box. Local Area Connection should now say Connected if you are on the UNE Domain. Close.



**Only if your computer is NOT on the UNE Domain**

*A popup box will appear in the bottom right hand corner when you connect for the first time.*

**Click on this box.**



User name – **your UNE username**  
Password – **your UNE password**  
Login Domain – leave blank

Click on “**OK**”.

You should now be connected.

