

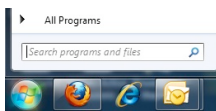
ITD Fact File: *How to* Connect to the **UNE Network** **Windows Vista** **Staff / Students**



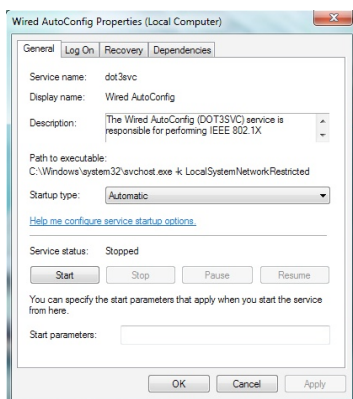
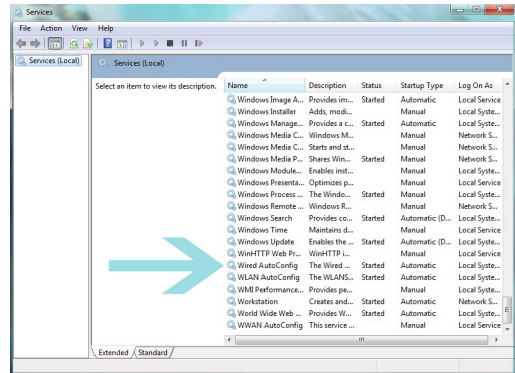
Information Technology Directorate – IT Service Desk
ITD Building C34
Email : servicesdesk@une.edu.au
Phone : (02) 6773 5000

1. Click on the **“Windows logo”**.

2. Type **“services.msc”** in the *Search programs and files* box and press **“Enter”**.



3. Scroll down until you find **“Wired AutoConfig”** and double click on it.



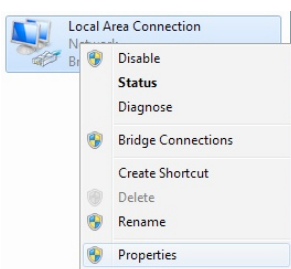
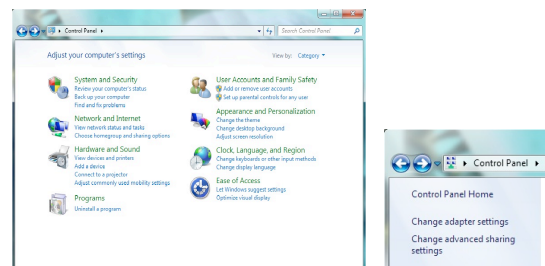
4. **“General”** tab
Startup Type drop down box – **Automatic**

5. Click on **“Start”** and then **“OK”**.

6. Close the **“Services”** window.

7. Click on the **“Windows logo”** → **“Control Panel”** → **“Network and Internet”** → **“Network and Sharing Centre”**.

8. Click on **“Change Adapter Settings”**.



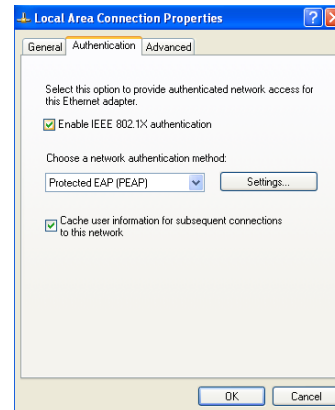
9. Right click on **“Local Area Connection”**
(If the connection is disabled, click on **“Enable”**, then right click again).

10. Click on **“Properties”**.

11. Click on the “**Authentication**” tab.

12. Enable IEEE 802.1x authentication – **ticked**
Choose a network authentication method drop
down box – **Microsoft: Protected EAP (PEAP)**
Cache user information for subsequent connections
to this network – **un-ticked**

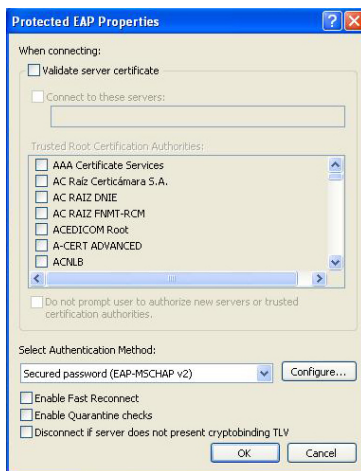
13. Click on “**Settings**”.



14. Validate server certificate – **un-ticked**
Trusted Root Certification Authorities – **nothing
ticked**

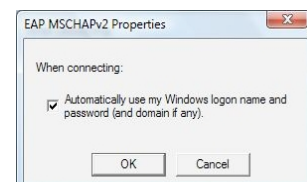
Select Authentication Method drop down box -
Secured password (EAP-MSCHAP v2)
Enable Fast Reconnect – **un-ticked**
Disconnect if server does not present cryptobinding
TLV – **un-ticked**

15. Click on “**Configure**”.



16. If your computer is ON the UNE Domain – **ticked**
If your computer is NOT on the UNE Domain – **un-ticked**
If you are unsure, contact Service Desk

17. Click on “**OK**” and close all windows. You should now
be connected.



Only if your computer is NOT on the UNE Domain

A popup box will appear in the bottom right hand corner when you connect for the first time.

Click on this box.



User name – **your UNE username**
Password – **your UNE password**
Login Domain – leave blank

Click on “**OK**”.

You should now be connected.

