

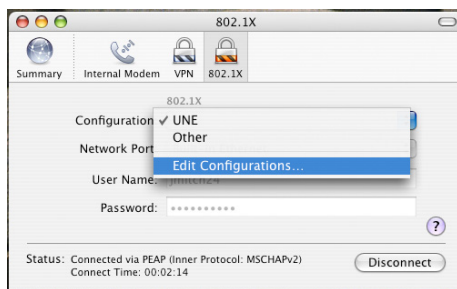
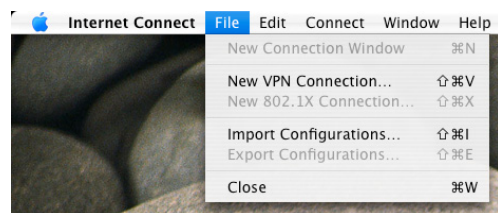


OSX 10.4 USERS

1. Click on the **Apple logo** top left corner.

2. Click on “**Applications**” →
“**Internet Connect**”

3. In the window that opens select the
“**802.1x**” tab (if you don’t see this go to “**File**”
menu and select “**New 802.1x Connection...**”

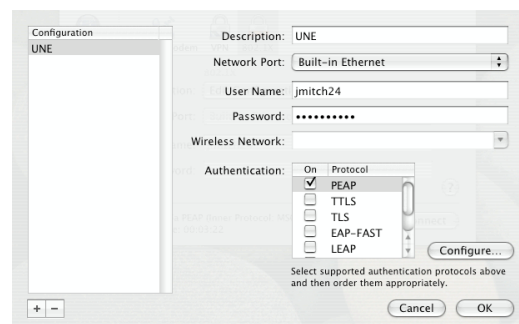


4. Network Port – “**Built-in Ethernet**”
Configuration – “**Edit Configurations...**”

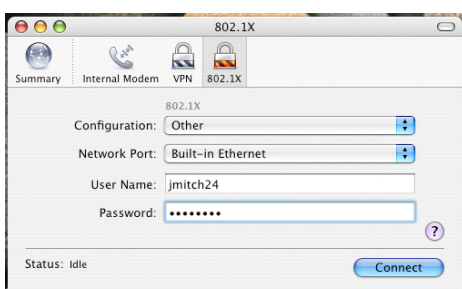
If prompted to save, name the configuration “**UNE Network**”.

(If “**Built-in Ethernet**” is shaded out, you are most likely connected to wireless – disconnect and try again)

5. In the Edit window, Description – “**UNE**”
Network Port – “**Built-in Ethernet**”
User Name – **your UNE username**
Password – **your UNE password**
Authentication – tick “**PEAP**” & un-tick all others – drag PEAP to the top so that it is first in the list



6. Click “**OK**”.

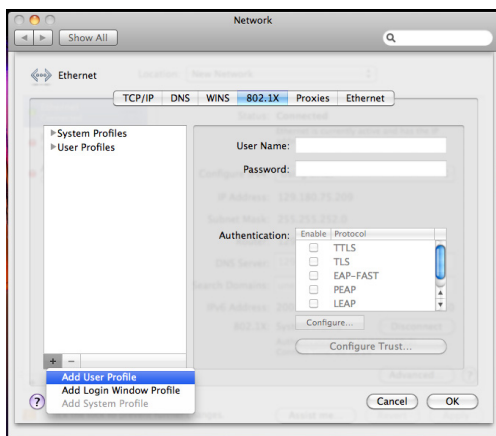
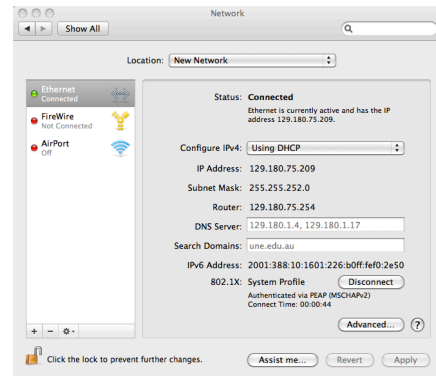


7. You should now be back at the “**802.1x**” screen. Click “**Connect**”. You are now connected.

NOTE: You will need to go to “**Applications**” → “**Internet Connect**” → “**Connect**” every time you restart your computer.

OSX 10.5 USERS or OSX 10.6 WITH MULTIPLE USERS

1. Click on the **Apple logo** top left corner.
2. Click on **“System Preferences...”**.
3. In the window that opens, under Internet & Network click on **“Network”**.
4. In the window that opens, click on **“Built-in Ethernet”** and click on **“Advanced”**.



5. Click on the **“802.1x”** tab.

6. Click on **“+”** and click on **“Add User Profile”**.

7. Call the new profile **“UNE Network”** and un-tick all other user profiles.

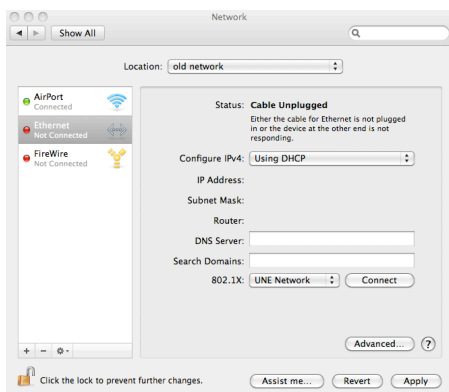
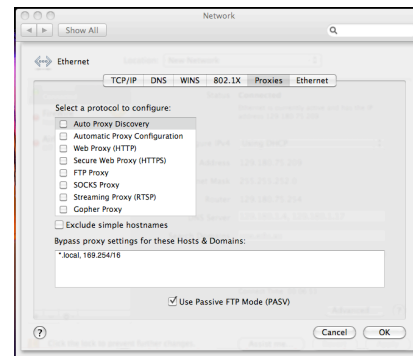
8. User Name – **your UNE username**
Password – **your UNE password**
Authentication – tick **“PEAP”** & un-tick all others

9. Click on the **“Proxies”** tab.

10. Configure Proxies – **“Manually”**.

11. Select a Protocol to configure - un-tick all options.
FTP Proxy Server – blank.

12. Click on **“OK”**.



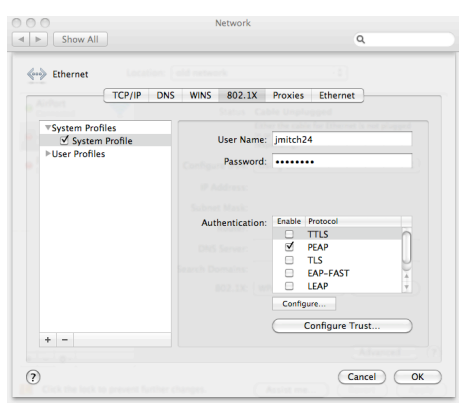
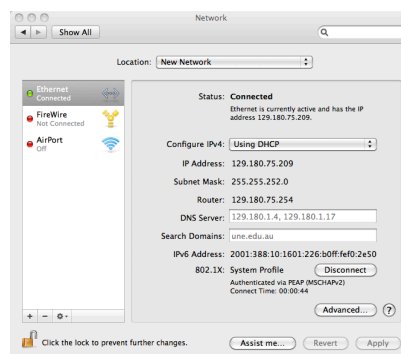
13. You should now be back at the network screen.
Click on **“Apply”**.

14. Next to **“802.1x”** select **“UNE Network”** from the drop down box. Click on **“Connect”**.

NOTE: You will need to go to **“System Preferences”** → **“Network”** → **“Built-in Ethernet”** → **“UNE Network”** → **“Connect”** every time you restart your computer or log in as a different user.

OSX 10.6 USERS

1. Click on the **Apple logo** top left corner.
2. Click on “**System Preferences...**”.
3. In the window that opens, under Internet & Network click on “**Network**”.
4. In the window that opens, click on “**Built-in Ethernet**” and click on “**Advanced**”.



5. Click on the “**802.1x**” tab.

6. Click on “**+**” and click on “**Add System Profile**”. (If you already have a “**System Profile**” option, make sure this is the only option ticked.)

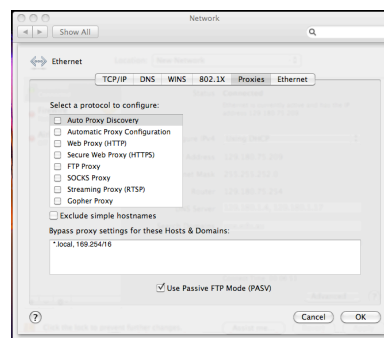
7. User Name – **your UNE username**
Password – **your UNE password**
Authentication – tick “**PEAP**” & un-tick all others

8. Click on the “**Proxies**” tab.

9. Configure Proxies – “**Manually**”.

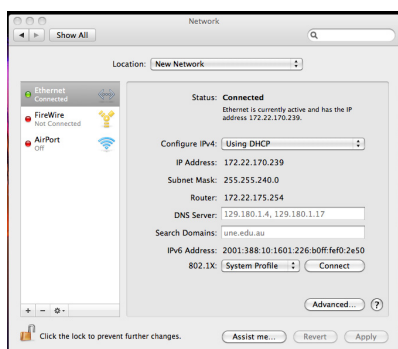
10. Select a Protocol to configure - un-tick all options.
FTP Proxy Server – blank.

11. Click on “**OK**”.



12. You should now be back at the network screen. Click on “**Apply**”.

13. Next to “**802.1x**” select “**System Profile**” from the drop down box. Click on “**Connect**”.



NOTE: You will automatically connect every time you restart your computer. However, it will use **YOUR** username and password, therefore everyone who uses the computer will be connected as **YOU**, and all associated internet charges will be billed under your name.