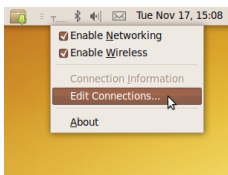


# ITD Fact File: *How to* Connect to the **UNE Network** **Linux Ubuntu** **Staff / Students**



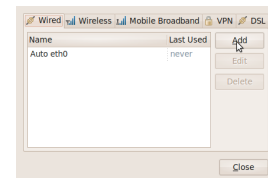
Information Technology Directorate – IT Service Desk  
ITD Building C34  
Email : [servicedesk@une.edu.au](mailto:servicedesk@une.edu.au)  
Phone : (02) 6773 5000

1. Right-Click on the “**Network Manager**” icon which may look like



2. Select “**Edit Connections...**” from the popup menu.

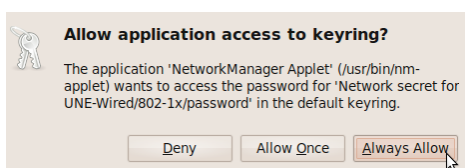
3. Click on “**Add**” to add a new Wired connection.



4. Fill in as per this picture, (except use your own UNE Username and Password).

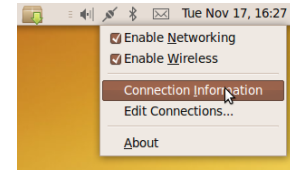
Click “**Apply**” and then “**Close**”.

5. Left-click on the “**Network Manager**” tray icon and select “**UNE-Wired**” from the list.



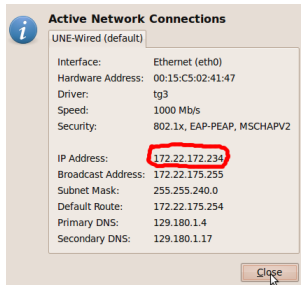
6. Answer “**Always Allow**” if you are asked to allow access to the keyring (this is to allow Network Manager to access your saved username and password details.)

7. Wait for the connection to be established. Once it is, right-click on the “**Network Manager**” icon and select “**Connection Information**”.



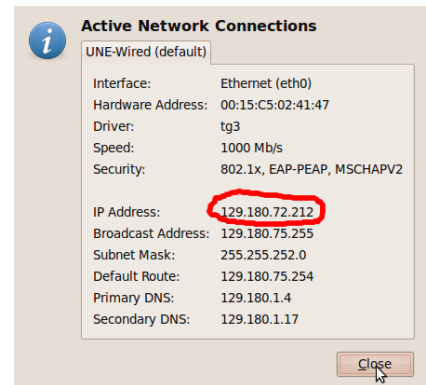
8. Check the IP Address. If it begins with 172.22 then close out and repeat from step 5.

(An address beginning with 172.22 indicates that the computer is considered to be in “remediation” by the network.)



9. Eventually you should obtain an IP Address beginning with 129.180.

(An address beginning with 129.180 indicates that the computer has passed the network’s security tests).



10. You should now be connected. Remember to clear any proxy settings in places such as web browsers and the package manager.