

# RESEARCH@UNE

MAY 2009

## IN THIS ISSUE:

1. *Spotlight* –RESEARCH IN LAW @ UNE
2. NEW RESEARCH PROJECTS AND INITIATIVES
3. GRANTS, RESEARCH CONTRACTS AND CONSULTANCIES
4. GRANT APPLICATIONS
5. FELLOWSHIPS, AWARDS AND SCHOLARSHIPS
6. NEW POSTGRADUATE PROJECTS

## *Spotlight* – LAW RESEARCH

*Dear Colleagues,*

In this third issue of Research@UNE we shine the spotlight on law research. I chose law research on this occasion because I think many people don't have a clear understanding of the kinds of research that are being undertaken in the law area. As you will see, law is an active area of research; research that results not only in published outcomes but also in impact in terms of influencing judicial thinking, policy development and legal perspectives on community and environmental problems and issues. Much of this research, conducted especially through the AgLaw Centre and funded externally, is multi-disciplinary and looks at important national and international issues such as water management and sustainable land management.



Professor Ray Cooksey  
Acting Pro Vice-Chancellor, Research

**THE SPOTLIGHT IN THE JUNE EDITION WILL FOCUS ON HIGHER EDUCATION RESEARCH AT UNE**



## SCHOOL OF LAW

**Prof. Jurgen Brohmer**, Head of School, in collaboration with a number of German colleagues, conducted an international constitutional law conference at the ANU in Canberra on the occasion of the 60th anniversary of the German Constitution, *the Basic Law*. For this purpose he brought together eminent scholars from Australia and Germany to discuss various constitutional law aspects and how and why they have shaped the constitutional realities in both countries. From Australia, speakers included the Director of the Gilbert & Tobin Center of Public Law at UNSW, Prof. Andrew Lynch, Prof. George Williams, perhaps the best known constitutional lawyer in Australia, and the Director of the National Europe Center at the ANU, Professor Simon Bronitt. Attending from Germany were the Director of the Europe Institute of Saarland University in Germany, Professor Torsten Stein and Professor Dieter Dörr, one of Germany's leading media lawyers. The President of the Victoria Court of Appeal, Chris Maxwell, gave one of the keynote addresses and the Chief Minister of the ACT the other. The conference was opened by Prof. Michael Coper, from ANU. The papers will be published in book form in Germany and Prof. Brohmer is working on publication in Australia. The conference found resonance within the High Court of Australia, as the German colleagues and Prof. Brohmer were invited by Justice Kiefel for lunch in her chambers with her colleagues, Justices Crennan and Heydon. Jurgen's areas of research include International Law, European Union Law, International and European Human Rights Law, and Comparative Law. **Professor Brohmer can be contacted on [hos-law@une.edu.au](mailto:hos-law@une.edu.au)**

**Michael Eburn** has been active in the areas of Emergency Management, as a guest lecturer at the Commonwealth's Emergency Management Institute, Mt Macedon, Victoria and presenting seminars for the New South Wales and Victoria State Emergency Services, the Country Fire Authority and the Office of the Emergency Services Commissioner (Victoria). He has written updates on litigation arising out of the 2003 Canberra bushfires for the Australasian Fire and Emergency Services Authorities Council and has been invited to provide expert commentary on legal issues arising from the Victorian and Canberra bushfires on Radio National's 'The Law Report'. He presented a paper, to be published in a special issue of the *Australian Journal of Emergency Management*, at the Emergency Media and Public Affairs Conference in Melbourne, which received the best research paper award. Michael is now working on research for his PhD "*Australia's International Disaster Response — Laws, Rules and Principles*", dealing with Australia's legal position on sending and receiving international disaster assistance in collaboration with Australian Red Cross and the International Federation of Red Cross and Red Crescent Societies. Part of the thesis will be published as a report entitled "*IDRL Asia-Pacific Study – Australia: Laws, Policies, Planning and Practices on International Disaster Response*" included in their 'International Disaster Response Laws, Rules and Principles' (IDRL) project. Michael is now leading the UNE team, in collaboration with the ANU and RMIT, in a bid for funding as part of the Fire – Environment and Society CRC. If successful this bid will see recurrent funding to UNE in the order of \$200,000 per annum for three years. Michael's main areas of research include Criminal Law and Procedure, Disaster Relief, Emergency Services, Ambulance Services and Law, Fire Fighting and Law, Law and Medicine, and Torts. **Michael Eburn can be contacted on [michael.eburn@une.edu.au](mailto:michael.eburn@une.edu.au)**

**A/Prof. Brian Simpson's** areas of research are Child Law, Law and Social Justice, Law and Urban Spaces which covers child poverty, homelessness and the exploitation of children and health, housing and social security; the legal (mis)construction of street racing as anti-social behaviour, the

filtering of the Internet at ISP level in Australia, constructing sexuality in teacher-student sexual relationships, looking at how the law constructs teacher-student sexual relationships, child friendly cities, children's rights and tourism, examining the extent to which child friendly cities are consistent with children's rights and the aims of tourism and constructing family responsibility in cyberspace. In April 2008 Brian made a *submission to the Senate Environment, Communications and the Arts Committee Inquiry into the Sexualisation of Children in the Contemporary Media Environment*, which in turn led to him being a discussant on the SBS program *Insight* about the Bill Henson photography controversy. He also made a submission to the Australian Communications and Media Authority on the draft Children's Television Standards. Brian continues his research in the areas of the legal conceptualisation of children in cyberspace, and sexualisation of the child, and the future of information and communication technologies examining the manner in which new technologies are redefining the governance of families. Brian is also the project leader for the Street Law Project, part of the UNE Rural Resurgence Initiative. With **Mrs Lucinda Noonan** he is investigating how the 'street law' concept might be applied in regional and rural settings to address disadvantage in accessing law. The Street Law concept originated in the United States but has now spread to the United Kingdom and other parts of the world. Essentially it began as a form of clinical legal education for law students, premised on the view that the best way to learn law is to teach law. In the United States it began as the teaching of legal rights to high school students by law students, but it has become a highly flexible approach to legal education and community development. The aim of this research is to establish how the Street Law approach might be adapted for rural and remote communities. Apart from the community benefit in acquiring knowledge and skills in legal areas, there is also the potential benefit in connecting law students with regional and rural communities. To date there is much enthusiasm from those communities about the potential of Street Law in addressing rural and regional disadvantage. **Prof. Simpson can be contacted on [brian.simpson@une.edu.au](mailto:brian.simpson@une.edu.au)**

THE TRAVELLING TORTS AND LEGAL HISTORY SCHOLAR...**Associate Professor Mark Lunney**, whose teaching and research interests are the Torts, the History of Common Law English and Legal Profession, and the relationship between private law and human rights, was an invited speaker, the only Australian, to the international symposium, Landmark Cases in the Law of Tort, held at the School of Law at King's College London. The paper he presented was on a case which involved a bushfire in Western Australia and which extended the law of negligence, and will form part of the book being published out of the symposium. Mark's expertise in tort law and legal history received further recognition this year when he was asked to deliver the annual lecture of the Francis Forbes Society for Australian Legal History. Apart from his legal history interests, Mark will be busy on more conventional tort scholarship, completing a study on liability for GMO release for the European Centre for Tort and Insurance Law in Vienna. He is also working on the new edition of his English text on tort law, co-written by Ken Oliphant and published by Oxford University Press. The book, which contains much original scholarship, highlights the imperative of staying informed by developments in other jurisdictions, in the age of globalisation. **Prof. Lunney can be contacted on [mark.lunney@une.edu.au](mailto:mark.lunney@une.edu.au)**

**Community Activism in Regional Development in the Liverpool Plains** - The granting of an exploration license to BHP Billiton in the Liverpool Plains has resulted in unprecedented opposition from members of the local community. As an important example of community activism, the Caroon Coal Action Group is the focus of a study to examine the nature of this 'protest' as a result of perceived failures in public policy and legislation to protect highly productive agricultural land. UNE is leading a small research team, which includes Professor Barbara Pini from Curtin University of Technology, Dr Ruth Panelli, from the University College of London, and **Professor Alison Sheridan and Dr Lou Conway** from the School of Business, Economics and Public Policy (BEPP) at UNE. This study will provide strong documentation of the activities of Caroon Coal Action Group and identify this 'struggle for place' within Australian and international literature. This research project will also

explore the broader governance framework within which this regional development activity is occurring.

**Professor Stephen Colbran** together with co-authors has completed Civil Procedure Commentary and Materials (4th ed, 2009) to be published by Lexis Nexis Butterworths on 7<sup>th</sup> July 2009. The 1200 page text is used in 14 Australian universities. The Australian Law Postgraduate Network ([apl.n.edu.au](http://apl.n.edu.au)) is now attracting more than 100,000 hits per month, and the ReMarks software development project is now conducting field trials at three universities.

**Dr Amanda Kennedy's** current research interests are in the area of industrial law, and include the use of individual contracts of employment, and occupational health and safety. She is also currently conducting research into employee liability for private out-of-hours conduct, assessing recent case law which has re-ignited the debate concerning the blurred boundaries between work life and private life. Dr Kennedy is also a member of the cross-disciplinary Rural Professions Research Network, established within the Faculty of the Professions, whose main interest is investigating ways in which the availability of rural professional services can be improved. She is currently coordinating a research initiative to establish a suite of rural professions research projects within the Faculty. She is also working on a collaborative project with the [Ag Law Centre](#) regarding usufructuary rights.

***Other Research undertaken by staff in the School of Law:***

**Russell Hogg** has published widely in the areas of criminology and criminal justice studies. His current research interests are in terrorism, crime and justice in rural communities.

**Dr Imtiaz Omar** research area encompasses Constitutional Law of Australia, Comparative Constitutional Law, International Law, Globalisation and Australian Constitutional Law, Individual Rights in Australia: Theory and Practice, and Comparative Human Rights: Theory and Practice

**Bryan Pape's** present research interest is in the area of law and economics, particularly, using public choice economics to develop ways to improve the working of Australian federalism from fiscal, constitutional and regional governance perspectives.

**John Page's** research interests are in Property Law and Intellectual Property Law, specifically common law property rights and the privatisation of public lands, and grazing rights regimes. His research into private rights in public lands in common law countries has impacted in the New Zealand High Court, and has collaborated with Dr Ann Brower (Lincoln, NZ) on the nature of pastoral tenure. His current research interests include a collaborative project with the Ag Law Centre regarding usufructuary rights.

**Heather Forrest's** particular areas of research interest include intellectual property rights in the context of domain names and global licensing of IP rights, including recent research on concept maps in legal education and global franchising.

**Dr Same Varayudej's** teaching commitments and research interests are in the areas of Corporations Law, Securities and Financial Services Law, International Trade Law, International Business Law, International Fisheries Law, Law of the Sea and Public international Law.

**Karen Lee's** research focuses on communications law and regulation, including communications network (or platform) issues and content, and the inter-play between competition law and regulation.

**Kip Werren** is conducting research into the utilisation of institutional arrangements in financial markets as a model for environmental resource markets; sustainable land use, and taxation incentives and economic behaviour of investors when presented with a subsidy.

**Cameron Moore's** research interests are Executive Power, Environment Law, Law of the Sea, International Law, the Law of Armed Conflict and Military Law.

**Julia Werren's** research interests are Health Law and Torts, such as the bioethics and law paradox, and public expectations of health professionals.

**Jennifer Greaney** - research interests include indigenous issues and judicial review.

**Aileen Kennedy's** research is in the area of health law, focussing on the law relating to brain death, withdrawal of treatment, consent, non-therapeutic body modification and medical negligence.

## AGLAW RESEARCH CENTRE

Law and institutions research through the Australian Centre for Agriculture and Law. The “AgLaw Centre” is the principal mechanism through which the School of Law pursues collaborative multi-disciplinary law and policy research. Many Law school staff (and staff from other schools) are involved in funded research through the Centre. The Australian Centre for Agriculture and Law (AgLaw) leads significant research into the law and legal governance of agriculture. The bulk of its work is inter-disciplinary, and concerned with sustainable natural resource management. The Centre has, in the last 4 years, emerged as a national leader with an international reputation in this field. This is particularly evidenced by its increasing role in shaping sustainability policy for governments in Australia and internationally. States with whom it is now engaged in this role (through various mechanisms) include Victoria, Iceland, Tajikistan and Krzykstan, and Micronesia. It is also increasingly seen as a multi-disciplinary collaborator of choice for research teams from Australia (various research teams and collaborative research programs), and internationally including the USA (Penn State), Switzerland (CDE, Berne), and for international projects (United Nations University). In this, the Centre clearly demonstrates success in delivering on the UNE ‘regional/global’ strategic ambition. The AgLaw Centre was recently awarded one of the Vice-Chancellor’s Awards for Outstanding Achievements in Interdisciplinary Innovation.

Victorian Dept of Sustainability and Environment - **Professor Paul Martin and Kip Werren** are working with the Victorian government to scope out some key components of Victoria’s legal and institutional arrangements for biodiversity and landscape conservation. Later this year it is planned that a discussion paper which they have written for the Department will form a centrepiece for the new landscape investment approach for that state. This work reflects prior work that the Centre has done on streamlining environmental legislation (for Land and Water Australia and the Australian Farm Institute); on structures and taxation arrangements for funding conservation (for Land and Water Australia), and on streamlined institutional arrangements for water (CRC Irrigation Futures).

The Centre is also working with four Queensland government departments to develop and trial a new ‘co-regulatory’ structure for landscape conservation and environmental accreditation, intended to link closely with streamlined regulatory arrangements.

CRC Irrigation Futures and other water related issues - **Professor Paul Martin, Dr Jacqueline Williams, and Christopher Stone** have been working intensively on water law and institutional arrangements through the CRC Irrigation Futures. That work has recently extended to the development of a unique method for analysis of the risk potential of proposed law and policies for water and other natural resources. That approach is now being applied in Western Sydney and Colleambally Irrigation Area, and will soon be applied to trans-boundary environmental law and to biofuels policy. Alongside this, the Centre has been developing a series of studies on the social license to farm and its link to both legal and voluntary arrangements. The Centre has been commissioned to develop a book on social license to farm issues, which links into a project commissioned through “EIDOS” for the Queensland government on mechanisms to better understand the social license issues for the proposed Traveston Dam.

**Dr Jacqueline Williams** is to present a paper in July 2009 at the Seventh International Conference on Ecosystems and Sustainable Development to be held in Italy. The paper will present work that the AgLaw Centre's Professor Paul Martin and Dr Williams have undertaken in Western Sydney as part of the CRC for Irrigation Futures research. The paper titled 'Ecosystem services: a means to diffuse political land use decisions in peri-urban regions' proposes an ecosystem services framework required to enable a market approach to ecosystem services in peri urban Australia. Dr Williams is also to visit the European Commission's Institute of Sustainability whilst in Italy and present on the

AgLaw Centre's next generation of natural resource governance and explore potential collaboration with the EC and Iceland.

United Nations project in Tajikistan and Kyrgyzstan - The Australian Centre for Agriculture and Law (AgLaw Centre) is the lead research organisation working to create an improved legal and regulatory framework to enable Sustainable Land Management in the Pamir Alai Mountains of Tajikistan and Kyrgyzstan. The project currently involves **Professor Paul Martin, Dr Ian Hannam (Adjunct Associate Professor) and Michelle Lim (PhD student)**, with another student anticipated to join the team within the next 12 months. The AgLaw Centre is providing guidance to the National Legal Tasks Forces in Tajikistan and Kyrgyzstan. The Centre is also supervising the work of PhD candidates that are undertaking specialized studies on issues of relevance to the legal and regulatory framework for Sustainable Land Management in the Pamir-Alai region. This international project is but one of the international environmental law projects for the Centre. **Dr Justin Rose** is currently engaged by the Government of Micronesia for the development of culturally relevant environmental law for that country (which continues a series of projects that he has conducted in the Pacific).

The Centre also has a number of PhD students engaged in law and legal institutions work, apart from the work in the Pamirs noted above. **Mark Shephard** is in the later stages of completing his thesis on the Environmental Duty of Care applied to agriculture. This study used an unique 'moot experiment' to test what this legal development might mean in practice to farming and the legal system. **Elodie LeGal** is researching legal and related innovations that might create new risk-instruments to tackle weeds. This includes consideration of new insurance products, adjustments to legal liability, labelling and site-inspection arrangements. We are currently negotiating collaboration with the industry to advance this work. **Chris Enright** is researching opportunities for co-regulation between industry and government, with particular emphasis on streamlining legal arrangements and obtaining better recognition for good practices. The Centre anticipates that we will soon have on board a PhD student looking at environmental laws in Thailand, in addition to co-supervision of PhD students looking at environmental taxation, property right and the environment and policy aspects of biofuels.

*For more information contact Professor Paul Martin, Director, AgLaw at [paul.martin@une.edu.au](mailto:paul.martin@une.edu.au).*

## **OTHER LAW-RELATED RESEARCH:**

**The Kyoto Protocol** has provided the context within which much of the policy debate on global warming has occurred. The Clean Development Mechanism (CDM) within the Protocol allows developed countries to establish emission-reduction projects in developing countries and obtain credits towards their commitments under the Protocol. The medium of exchange under CDM is the CER (Certified Emission Reduction). In order to receive certification and enter the CER market, projects must incur various transaction costs in showing that they are reducing net greenhouse-gas emissions compared with business-as-usual. The process of gaining certification under the CDM is quite complex and can result in very high transaction costs. These costs reduce the returns obtained by landholders who wish to be involved in carbon projects and, if high enough, may eliminate any incentives to participate. Transaction costs are a necessary evil, as investors in carbon markets need assurance that the 'commodity' they are investing in actually exists. However, the rules and procedures could be streamlined to reduce transaction costs and hence increase monetary incentives for landholders to participate in the market. Our research focuses on these issues and identifies the conditions under which projects involving groups of landholders are economically feasible. The techniques we have developed may have application to the Australia case and contribute to the debate on the design of the Emissions Trading Scheme and the potential role of the land-use change and forestry sectors.

*For more information contact A/Prof Oscar Cacho (BEPP) [ocacho@une.edu.au](mailto:ocacho@une.edu.au)*



## NEW RESEARCH PROJECTS AND COLLABORATIONS



### **Report on Recent Event: “Valuing Water: Perspectives from Northern NSW” WRaIN Symposium, UNE, 25-26 May, 2009**

Recently WRaIN hosted an extremely successful Symposium at UNE, which brought senior policy people from Federal and State Government agencies and key stakeholders in water management in our region, into conversation with UNE researchers from a range of disciplines. WRaIN is a unique multi-disciplinary research network at UNE whose mission is to address the critical water issues that humanity is presently facing, at a time of increasing uncertainty and complexity in global economic and environmental forecasts. WRaIN is comprised of an extensive intellectual resource base and skill set unparalleled in the Australian research landscape, and has the ability and capacity to establish and deploy collaborative research teams bringing together expertise in law, policy and economics, the physical, biological and social sciences, and the humanities and the arts. The water and water-related research programs span all disciplines and Faculties at UNE, as well as all of the Research Centres within the University who specialize in water-related research, both here and overseas.

The Symposium was driven by firstly the need to showcase the research capacity of WRaIN to tackle one of Australia’s biggest problems, water, and secondly by the recognition that the regional and rural communities of the Northern NSW and Southern Queensland Murray Darling Basin that UNE serves are undergoing significant restructuring due to current water availability and allocation issues; this makes them different from their urban counterparts, and also from their neighbours along the rivers to the north and to the south. The two main objectives of the symposium were to give potential clients a voice for identifying what they consider to be their most pressing research needs and what they need from us to find the answers, and for UNE researchers to determine how we can best address those needs.

The event was carefully structured to maximize the achievement of our objectives. In the first session, which began with a keynote address by Ken Matthews, Chair and CEO of the National Water Commission, invited delegates identified the current state of play in water management in our region and what they see as the most pressing problems of the future. This conversation continued over the symposium dinner that evening. On the following day, the response from UNE researchers focused on the key issues raised to that point, and described our research capacity to address those issues.

We are extremely pleased with the outcome of the Symposium because not only did we meet our objectives in the frank and open discussions that took place, but we also highlighted the strong interdisciplinary research capacity of UNE to respond to a broad range of critical research needs. Equally as important is the fact that we gained valuable information for planning inter- and multi-disciplinary research and funding directions as well as commitments of support for future WRaIN activities. In the short term the Murray Darling Basin Authority, the Department of Primary Industries and Namoi Water have committed to assisting with a Scoping Study. The event and an overview of our objectives were featured in several ABC radio broadcasts.

What follows represents an outline of the key research issues (themes/questions/areas) identified by the Symposium that provide future directions for inter- and multi-disciplinary research to be conducted by the members of WRaIN. The geographical focus is the Northern NSW and Southern

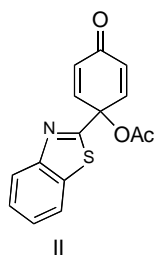
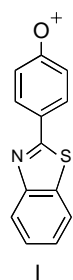
Queensland region of the Murray Darling Basin with broader national and international relevance and comparison.

- Improving the process of structural adjustment of rural and regional communities, agriculture, economies and environments to build community confidence in water management.
- Developing models for good governance that include decision-making processes, designing institutions, integrated policy, planning and policy, community confidence, social license, evaluation and auditing.
- Water wisdom – to use the best available scientific knowledge to inform debate on the sustainable levels of water extraction, entitlements and allocation.

We wish to thank the Faculty of Arts and Sciences, in particular the initiative of Professor Heiko Daniel, for the funds to produce a Capacities Statement document and to host the Symposium.

**Dr Louise Noble**, Coordinator

## School of Science and Technology



### Collaboration

A collaboration between the University of New England's Professor Steve Glover and Professor Mike Novak at Miami University in the US recently implicated highly unusual reactive intermediates, called aryloxenium ions, in the anticancer activity of a new type of antitumour drug. The drug (a 4-(benzothiazol-2-yl)-substituted quinol ester **II**) has demonstrated strong activity against a range of human colon and breast cancer cell lines. Experimental detection and trapping of the ions at Miami University has been supported by quantum mechanical computations carried out at University of New England and which accurately predicted the structure and reactivity of the 4-(benzothiazol-2-yl)phenyl oxonium ion **I**. Their research has shown that the ions may well be formed from the drug under physiological conditions and could be the responsible for their anticancer activity. Similar aryloxenium ions were first generated chemically by Professor Novak and modelled computationally by Steve Glover, while Mike Novak was on sabbatical at UNE in 2003. Since then the collaboration has produced six publications in J.A.C.S. and J. Org. Chem., high impact journals of the American Chemical Society, as well as a theoretical paper in the Canadian Journal of Chemistry. The latest work will be published in the ACS Journal of Organic Chemistry as a special Feature Article in recognition of the quality and importance of the work.

## Animal Genetics and Breeding Unit (AGBU)

**Dr Karin Meyer (AGBU)** will collaborate for 3 years (2010-2012) with a working group hosted by the National Institute for Mathematical and Biological Synthesis (NIMBios), at the University of Tennessee, Knoxville. This project will bring together small groups of researchers from mathematics, biology and other fields to investigate very specific applied issues, as well as fundamental scientific problems. Dr Meyer will join a working group on Cross-Topology Registration, i.e. loosely speaking, the statistical analysis of shapes in biology.

## Faculty of the Arts and Sciences

**Prof. Cliff Goddard** co-organised a workshop at Griffith University on "The Future Australian National Corpus: Ethical and Legal Issues". As well as scoping out legal and ethical issues, the

participants decided to initiate several collaborative research projects for 2010. The term 'corpus' refers to a massive online database of spoken and written language in all its forms and diversity. Many countries have such research infrastructure already in place, and Australian linguists, language technologists, and e-researchers in social sciences and humanities are pushing for its establishment here. The workshop was funded by the Australian Academy of the Humanities. Participants included IT experts such as Prof. Jane Hunter (UQ), specialists in e-law issues such as Prof. Anne Fitzgerald (QUT), a representative of the Australian Institute for Aboriginal and Torres Strait Islander Studies, and linguists from Griffith, Macquarie, and Monash, including Prof. Kate Burridge (well-known for her media work on language matters in Australia).

With the aim to establish UNE as an Australian hub for critical studies in childhood, **Dr. Gail Hawkes** collaborated in organising a successful one Day Symposium on Representing the Child, Past and Present, at the National Marine Science Research Centre, Coffs Harbour, on April 15<sup>th</sup>. This symposium had seven speakers from UNE, Flinders University, SA, Australian Catholic University Vic., University of Western Sydney and St Lawrence University, USA.

## GRANTS, RESEARCH CONTRACTS AND CONSULTANCIES

### Successful ARC Linkage applications:

**Prof. Michael Bittman and Prof. Len Unsworth (EDUC)** – *“Digital Natives: Growing up with new and old media in Australia”*. Funded for 3 years, \$139,320

**Dr June Ross (HUM) & Prof. Mike Morwood (through University of Wollongong)** – *“Change and continuity: chronology, archaeology and art in the North Kimberley, Northwest Australia”*. Funded for 3 years, \$428,000

### Other successful grants for May:

**A/Prof Stephen Smith, Prof Alistair McIlgorm (NMSC)** *Marine Knowledge Review - HCRCMA Knowledge Program 2008/09*, HCRCMA, General \$70,000

**Dr Nick Reid (ERS)**, *Prioritised Threatened Vegetation Communities Extension Material – Vegetation*, BRGCMA, General \$9,570

**Dr Nick Reid (ERS)**, *Native Vegetation Remnant Management Study Killaloo, Waterloo Creek, Bellata*, BRGCMA, General \$12,000

**Prof Alistair McIlgorm (NMSC)**, *Marine Survey of Ashmore Reef National Nature Reserve and Cartier Island Marine Reserve*, ARCCRS, General \$5,060

**Prof David Cottle (ERS), Dr Peter Lane and Prof Belinda Tynan (FOTP)** *eDST: Decision support tools for multi-disciplinary applications in higher education*, ALTC, General \$215,003

**Total for May \$883,243**

**Research Contracts and Consultancies:** Contracts, tenders or EOIs have been executed or submitted for the following projects (May 2009):

**Dr Jacqueline Williams, (LAW)**, *Queensland Water Infrastructure (QLDWI) Traveston Dam Crossing 2020 Scoping Study*, Eidos Institute, \$21,498. **SUCCESSFUL**

**Dr Elaine Barclay (IRF)** *Impacts of Water Trading in the Southern Murray-Darling Basin*, National Water Commission, \$149,200 (GST inclusive). **SUCCESSFUL.**

**Dr Graeme Marshall, (IRF)** *Review of Macquarie Marshes Adaptive Environmental Management Plan*, NSW Department of Environment and Climate Change, \$4,290 (GST inclusive). **SUCCESSFUL.**

**Dr Robyn Bartel, and Dr Elaine Barclay, (IRF)** *Understanding the Native Vegetation Regulated Community*, NSW Department of Environment and Climate Change, \$55,550 (GST inclusive). **WAITING FOR CONFIRMATION.**

**Ms Pauline Fleming, (BEPP)** *Follow-up advice for analysis of turnover movements associated with a change in business environment*, APJ Law \$1,504 **CONTRACT IN PREPARATION**

**Prof. Paul Martin, (AgLaw)** *Water Management Services (Financial, Legal and Due Diligence) Panel Arrangement Dept of the Environment, Water Heritage and the Arts* **PROPOSAL**

**Prof. Margaret Sims (EDUC)** *Funding Proposal to Develop the KidsMatter Transition to School: Parent Initiative*, Dept of Health and Ageing \$498,455 **PROPOSAL**

**Prof. John Geake (EDUC)** *International (EDUC) for the Gifted and Talented Centre for Better Teaching - CfBT (EDUC) Trust* \$30,103 **CONTRACT IN PREPARATION**

**Dr Bob Boughton (EDUC)** *Action Based Learning for Two Ways Together Partnership Community Program (DAA project)*, Beetson & Associates Pty Ltd \$40,000 **CONTRACT IN PREPARATION**

**Dr Fran Rolley (BCSS)** *Better indicators of net migration drivers in non-metropolitan NSW*, NSW Dept of Planning \$23,636 **CONTRACT IN PREPARATION**

**Prof. Margaret Sims (EDUC)** *Literature Review on the Quality of Early Childhood (EDUC) for Under Two's*, NZ Ministry of (EDUC) \$38,712 **PROPOSAL**

**Dr David Paterson (EDUC)** *(EDUC) in Inclusive Classrooms Catholic Schools Office - Diocese of Armidale* \$8,362 **CONTRACT IN PREPARATION**

## GRANT APPLICATIONS SUBMITTED IN MAY

**A/Prof Bob Boughton, Dr Paul Reader (EDUC)** *VET and adult educators' sustainability response in rural communities*, NCVER, NVETRE asking \$93,155

**A/Prof Paul Iji, Mr Mark Porter and Ms Shuyu Song (ERS)** *Enhancing the nutritive value of distillers dried grains with solubles (DDGS) for broiler chickens*, ADISSEO, Rovabio Research Grant asking \$93,258

**Dr David Herridge (ERS)** *Increasing food security and farmer livelihoods through enhanced legume cultivation in the central dry zone of Myanmar* ICRISAT, General asking \$22,634

**Dr Dennis Mather (AINSE), A/Prof Martin Thoms (ERS)**, *High-resolution ITRAX XRF core scanning facility for global change research*, ARC, Linkage Infrastructure asking \$476,000

**Dr Elaine Barclay (IRF)** *Impacts of Water Trading in the Southern Murray-Darling Basin*, FE, General asking \$149,200

**Dr Geert Geesink, Prof John Thompson (ERS)** *Part 1: Enzyme tenderizers for fresh meat* MLA, General, asking \$9,5580

**Dr Julius van der Werf, Prof Brian Kinghorn (ERS)** *Methods to infer dense genomic information from sparsely genotyped populations* ARC, Linkage, asking \$376,156

**Dr Stephen Winn, Prof Ian Hat (EDUC)** *Developing an effective and reliable tool to measure the outcomes and performance of small to mid size service providers in the disability sector* ARC, Linkage, asking \$ 144,579

**Dr Subhadip Ghosh, Dr Brian Wilson, A/Prof Heiko Daniel, Dr Bhupinderpal Singh and Dr Nilantha Hulugalle (ERS)** *A mechanistic assessment of soil carbon dynamics in major land use systems in north-western New South Wales*, ARC, Linkage asking \$240,364

**Dr Wendy Brown (ERS)** *Longer Lasting Dentastix 2009*, MARSpetcare, General asking \$127,920

**Dr Yuri Amelin (ANU) Prof Ian Metcalfe (ERS)** *A facility for Sensitive and Precise Isotopic Dating of Earths and Extraterrestrial Rocks (SPIDE2R)* ARC, Linkage Infrastructure, asking \$624,865

**Prof Hugh Ford, Dr Karl Vernes and Mr Glenn Storrie (ERS)** *The impact of native and exotic rodents on breeding success and population size of the Wedge-tailed Shearwater*, ARC, Linkage, asking \$80,007

**Prof Margaret Sims, Mr Anthony Semann and Mr Colin Slattery (EDUC)** *Early Childhood Education*

and Care Workforce Best Practice and Innovation Project, DEEWR, Tender Application, asking \$29,976

**Dr Kim Bunter, Dr Hans Graser (AGBU)**, *Genetics of reproductivity performance and sow longevity - postdoctoral support*, PORK CRC, asking \$198,378.

## FELLOWSHIPS, AWARDS AND SCHOLARSHIPS

**Dr Louise Noble** has been awarded a two-month Folger Shakespeare Library Research Fellowship in Washington DC with a stipend of US\$5,000. Louise will take up the fellowship during September and October 2009 while she is on SSP leave. The fellowship project, 'Floating Upwards: The Rhetoric and Practice of Water Management in Early Modern England', builds on the interdisciplinary initiatives of the UNE Water Research and Innovation Network (WRaIN), which Louise convenes.

### STEMMING THE BRAIN DRAIN – POULTRY CRC POULTRY HUB WINS

#### EDUCATION, TRAINING AND PUBLIC OUTREACH AWARD

The Poultry CRC's Poultry Hub is helping to stem the brain drain from agricultural studies at Australian schools and universities. Students and educators from Australia and around the world are using Poultry Hub to help them learn about poultry and poultry production, stimulating interest in poultry science. The Cooperative Research Centres Association (CRCA) recognised Poultry Hub's efforts at its annual conference, with Poultry Hub winning the **Award for Excellence in Innovation in education and training and public outreach activities**.

Poultry CRC CEO, Professor Mingan Choct, said enrolments in university agricultural science courses were declining at a time when the key agricultural sector needed to skill up. "Demand for graduates in agricultural science is projected to grow explosively as Australia defends its lead in the field," he said. Based on the popular wiki software, Poultry Hub's array of useful resources and multimedia are proving a hit with both students and teachers alike. Poultry Hub is being developed by the Poultry CRC to support the transfer of information from R&D into the industry as well as supporting the education and training aims of the CRC.



### SHEEP CRC - PRECISION SHEEP MANAGEMENT TAKES OUT MAJOR AWARD

A revolutionary approach to sheep management has been hailed as a nationally significant innovation in the field of science and technology. Presented at the annual CRC Association's annual Excellence in Innovation awards event in Canberra, the Sheep CRC received the **Excellence in Innovation Award for its developments in Precision Sheep Management**.



The Cooperative Research Centres Association represents Australia's 50 CRCs, which operate under a federal government program to drive public/private sector research. Accepting the award on behalf of the Sheep CRC, CEO Professor James Rowe, acknowledged the team effort required for such an ambitious industry initiative and the value of the CRC model. "Essentially, *Precision Sheep Management* is a package of tools for graziers to move the management of their sheep from a mob to

an individual basis. Historically, shepherds looked after the whole flock. Over time, that moved to

farmers dividing sheep up into groups based on age, sex, type or breed and managing those as mobs. "Now, with affordable and robust technology, we can monitor and manage each and every animal in the mob according to its needs and merits, as well as the farmer's and the markets needs. It is a whole new approach to livestock management, and it is driving productivity improvement." Prof Rowe says *Precision Sheep Management* (PSM) builds value from the significant variability among all sheep flocks, even within very uniform, well-bred, long-term closed flocks. "We estimate that the adoption of PSM by 20 per cent of the Australia sheep industry has the capacity to increase industry profits by \$82 million per annum within ten years," Prof Rowe said.

#### **Vice-Chancellor's Awards for Excellence in Research were awarded to:**

The QuickSmart Team – Associate Professor Lorraine Graham, Professor John Pegg, Ms Jenny Thomas, Ms Noelene Raymond and Ms Eve Croeser - SiMERR  
Individual Award – Professor Brian Byrne – BCSS - Psychology  
Individual Award – Professor Amarjit Kaur – BEPP – Economic History  
Individual Award – Dr Anne Pender – Arts – English & Theatre Studies  
Individual Award – Dr John Paterson – ERS – Earth Sciences

**David Penn**, a final year PhD student in Linguistics, has been successful in winning the inaugural Australian Linguistic Society 'International conference scholarship' worth \$2500. David beat out 10 other candidates from the Universities of Sydney, Melbourne, Monash, Latrobe, ANU and Edith Cowan. This is a great achievement. David will be attending the Linguistic Society of American biannual summer school in linguistics, 6 weeks of intensive coursework with some of the leading scholars in the field.

Returning PhD student (and APA holder) **Ms Helena Pastor** has been awarded an Australian Society of Authors Mentorship for 2009-10 for work on 'Yahtzee and the Art of Happiness'.

PhD student **Todd Green** (ERS) has been awarded one of 11 positions for the 2009 – 2010 Australian Future Cotton Leaders Program.

#### **NEW POSTGRADUATE PROJECTS:**

**MARK CONROY, (BCSS)(Linguistics)** The topic of his thesis is "Syntactic priming: Implicit second language learning".

**KERRY WATSON, (ARTS)** *The Multicultural Violin: Processes and Concepts in Present-Day Australian Music Performance Fusion*

**GAIL MACDONELL, (BCSS)** *A Cross-Validation Study of the Partners of Combat Veterans Questionnaire*

**ROSA PINNIGER, (BCSS)** *The Effective Embrace : Using Argentine Tango as a Complementary Therapy for Psychological Distress*

**NICHOLAS FLOOD, (BEPP)** *An investigation of a sample of key stakeholder's views regarding the business implications and politics accompanying the climate policy debate in Australia.*

**SUBRATA SHANKAR DHAR, (EDUC)** *Secondary Education Reforms in Bangladesh: Local Preferences vs Globalised Discourses*

**FIONA FISHPOOL, (ERS)** *To Develop Methods Which Allow The Quantification of Intake by Sheep of a Medicated Feed Block and Determine the Animal and Parasite Characteristics Associated with Block Acceptance and Refusal*

**CHRISTINE FYFE, (ERS)** *Redesigning farming landscapes: enhancing soil ecosystem resilience, diversity and functioning*

**MARIA O'BRIEN, (ERS)** *The Role of Arbuscular Mycorrhizae in Active Vegetation Regeneration After Fire*

**WILLIAM WARD, (ERS)** *A New Generation of Ecological Database (EcoBase)*

**ANTHONY FERGUSSON, (HLTH)** *An Investigation into the Application of Body Mass Index, Bioelectrical Impedance and Skin Fold Measurements and the Potential Degree for Misclassification of Physically Active Males*

**GLENYS ALLISON, (HUM)** *A Comparative Study of Sydney Group Purchase Soldier Settlements*

**ZEENA ELTON, (HUM)** *Beyond Dominant Paradigms of Motherhood and the Feminine*

**NIGEL HOLMAN, (HUM)** *Reality and perception: The Germanic Threat AD9-180*

**MICHELLE LIM, (LAW)** *Transboundary Environmental Law for the High Pamirs*

**JOANNE VICKERY, (RMED)** *Improving the Efficacy of Learning Outcomes in Situations Where There is an Ever-Increasing Number of Non-English Speaking Background Students*

**ILONA CILLER, (S&T)** *Identifying the Role of BMP and BMP Receptors in Reproduction*

**ADAM ROSSER, (S&T)** *Thermal Decomposition of N-acyloxy-N-alkoxyamides - The project will investigate a range of bisheteroatom-substituted amides in terms of their unusual properties, chemical reactivity and thermal decomposition reactions. The discovery at University of New England of this unique class of amides has led to new chemical reactions and novel structural properties. These compounds are also of interest due to their potential application as cancer chemotherapy drugs. This project aims to explore fully the impact of various bisheteroatom substitution arrangements from a chemical, physical and theoretical point of view.*

**MICHAEL SCHAEFER, (S&T)** *Advanced Optical Sensing of Biomass in Plant Canopies*

**JELENA SCHMALZ, (S&T)** *Limited-Data Phase-Contrast Tomography*

**ANNEMAREE O'BRIEN, (EDUC)** *Teaching and Assessing Effective Multimodal Authoring in the Middle Years*

**DAVID FOLEY, (ERS)** *Evaluation of Potential of Silver Perch for Agriculture*

**AMANDA DOUGHTY, (ERS)** *To Assess the Usefulness of Operant Conditioning Techniques and Demand Functions for Determining the Motivation for Food in Calorie-Restricted Sheep*

**HELENA AHULU, (BEPP)** *What Corporate Social Responsibility Issues do Australian Mining Companies in Ghana Ahedid To*

**LAKMINI DISNA SAJEEWANI GASPE RALALAGE, (BEPP)** *To Identify Whether Trade Liberalization Policies have an Impact on Environment Degradation in Sri Lanka and to Suggest Mitigatory Measures*

**ARUNI UDYANI HETTIACHCHI GUNAWARDENA, (BEPP)** *Impact of Politics Related to Genetically Modified Food in Developing Countries (with Special Reference to South Asian Countries)*

**MAHAMARAKKALAGE SUMUDU SENANI PERERA, (BEPP)** *South Asian Regionalism: An analysis of Different Policy Options for Sri Lanka*

**NAZMA BEGUM, (ERS)** *The Effects of Zeolite on Nitrogen Use Efficiency in Course Textured Soils Used for Pasture Production*

**SHEIKH MOHAMMAD FAZLE RABBI, (ERS)** *Soil Organic matter Dynamics at Micro-Aggregate Scale Under Different Organic Inputs*

**PAUL MUTUKU MUSILI MUSILI, (ERS)** *Systematic Studies In Schoenus (Cyperaceae): An Underestimated Component; Australian Biodiversity*

**NIMAI SENAPATI, (ERS)** *Dynamics of Organic Carbon in Soils as Influenced by Land Use System and Crop Management Practices*

**PRIYAKANT SINHA, (ERS)** *GIS and remote Sensing for Assessing the Impact of Disturbance on Biodiversity and Land Cover Change Due to Environmental Degradation*

**KHOI DANG DO, (HLTH)** *Does Physician Bias Affect the Quality of care They deliver? The Case of STI Care in Vietnam*

**JOHN IDRIS LAHAI, (HUM)** *Women, Victimhood and Transitional Justice Mechanism in Sub-Saharan Africa*

**SANDY HABIB, (BCSS)** *Semantic and Conceptual Analysis in Arabic and Hebrew (NSM Approach)*

**LINFENG MEI, (S&T)** *Spikes and Layers in Allen-Cahn Equation*

**ELISABETH JENSEN, (ARTS)** *The Export of Australian Roots Music: An Investigative Study*

**DANIEL RORKE, (ARTS)** *Confluent Composition in Iceland and New Music within Isolated Communities*

**REBECCA FLEMING, (HUM)** *Forgotten Women of the Forgotten War: An Examination of the Role and Experiences of Australian Nurses Who Served in the Korean War, 1950-1956*

**JILLIAN HUNTLEY, (HUM)** *Field Portable X-Ray Fluorescence Analysis of Pigments, North-West Kimberley Rock Art Assemblage*

**AMY-SUE ALSTON, (S&T)** *The Catalytic Conversion of Oxygenated Hydrocarbons Produced from Bio-Mass into Liquid Alkanes for Bio-Fuel Application* - There is a pressing need to develop economical and energy efficient processes for the sustainable production of fuels and chemicals. This is due to declining petroleum resources, combined with increased need for petroleum by emerging economies, and political and environmental concerns about the use of fossil fuels. The production of bio-ethanol from lignocellulosic biomass typically involves three steps: (1) Pre-treatment of lignocellulosic materials to enhance enzymatic/microbial/chemical saccharification; (2) saccharification of cellulose and hemicellulose to fermentable reducing sugars; and (3) fermentation of the sugars to bio-ethanol. This project will focus on the pre-treatment of lignocellulosic biomass with ionic liquids. The ionic liquids are used to separate lignin from cellulose, and decrease the crystallinity of cellulose, which enhances saccharification.



***Please forward information for the newsletter to the contacts in your Faculty or Centre:***

Faculty of Arts and Sciences:	<b>Shelley Harvey</b> , extn. 2726, email: <a href="mailto:sharvey@une.edu.au">sharvey@une.edu.au</a>
Faculty of The Professions:	<b>Sue Whale</b> , extn. 3848, email: <a href="mailto:swhale2@une.edu.au">swhale2@une.edu.au</a>
Inst. Rural Futures:	<b>Cathy Coleman</b> , extn. 2220, email: <a href="mailto:ccoleman@une.edu.au">ccoleman@une.edu.au</a>
AGBU:	<b>Marlene Youman</b> , extn. 2055, email: <a href="mailto:myouman@une.edu.au">myouman@une.edu.au</a>
PIIC:	<b>Elizabeth Davies</b> , extn. 2745, email: <a href="mailto:edavies4@une.edu.au">edavies4@une.edu.au</a>
NMSC:	<b>Steve Smith</b> , phone: 02 6648 3908, email: <a href="mailto:ssmith@nmsc.edu.au">ssmith@nmsc.edu.au</a>

***For feedback and other enquiries with regards to the newsletter please contact :***

Office of the PVC Research      **Donna Santilli**, extn. 5055, email: [dsanti2@une.edu.au](mailto:dsanti2@une.edu.au)